

FLORICULTURE RULES – DEPARTMENTS 7 THROUGH 12

1. Open to residents of Butte, Colusa, Glenn, Plumas, Sutter, Tehama, and Yuba Counties.
 2. Entry forms for Thursday Floriculture Arrangement Divisions must be in the Entry Office by Wednesday, May 23 at 3:00 pm. All other entry forms for each day must be delivered to the Entry Office before 3:00 p.m. on the preceding day, and exhibit must be in place by 10:30 a.m. on the day designated in the exhibitor handbook.
 3. Open to amateurs only.
 4. Exhibits in the Floriculture Department must have been grown by the exhibitor within the county, district, or community represented, except for Arrangement Classes. Only persons licensed to sell nursery stock may sell plant materials which have been incorporated in displays.
 5. Fresh flowers or plant material must be used in all other classes unless otherwise specified.
 6. Potted Plants exhibits must be adequately and correctly labeled with owner's name on bottom of container. Plants should have been in the exhibitor's possession for 60 days prior to the opening day of the fair. Cut flowers must be exhibited in containers supplied by the Fair Association, except pansies which should be displayed in a shallow bowl.
 7. Arrangements entered in Junior Classes must be made by the Junior, in whose name the exhibit is entered, without adult assistance and must be made in a location designated by the Superintendent of Floriculture. Any deviation from this rule may disqualify the entry.
 8. In all arrangement classes, figurines or dry material may be used as accessories unless otherwise specified. Use of heirlooms or valuable items is discouraged. Local Rule #13.
 9. Exhibitors using special background, driftwood, figurines, etc. must furnish adequate support of same. Failure to comply with this may result in loss of premiums paid.
 10. Gardens may be removed after 8 p.m. on Monday, May 28. Floriculture surveillance will not be provided after 10 p.m.
 11. All cut flowers become property of the Fair unless called for by 7:00 a.m. the day following exhibit.
 12. The Best of Day Exhibit in the open division will receive an Outstanding Exhibit rosette ribbon and \$25.00. An Outstanding Exhibit rosette ribbon and \$10.00 will be presented to the Junior Floriculture exhibitor with the outstanding arrangement on Saturday, Sunday, & Monday.
 13. SWEEPSTAKES: Separate sweepstakes shall be offered in Collections, Potted Plants, Cut Flowers, Master Arrangements, Advanced Arrangements, Intermediate Arrangements, and Novice Arrangements. First Place \$10, Second Place \$8, Third Place \$6.
 14. DEFINITIONS:
 - NOVICE: Open to amateurs who have not won more than four blue ribbons at any previous Silver Dollar Fair.
 - INTERMEDIATE: Open to amateurs who have won five or more blue ribbons at any previous Silver Dollar Fair.
 - ADVANCED: Open to amateurs who have had five or more years of experience in flower arrangement competition and is not, or has not been engaged in flower arranging as a teacher, lecturer, judge or in a commercial enterprise.
 - MASTER: Open to all persons who have judged, lectured, or persons who have been engaged in flower arranging for a commercial enterprise.
 - TABLE SETTINGS: A decorative unit shall be included. Accessories or decorative foliage permitted. No artificial flowers, fruit or foliage permitted. Dry plant material that has been painted or treated with preservatives will not be considered artificial for the purpose of this rule. Some fresh plant material desirable in all arrangements.
- Eight table setting spaces will be available each day. Exhibitors will be assigned a table space as entries are received and will be limited to one entry per day. If an exhibitor is unable to place their table setting entry, please notify the Entry Office so an alternate can be notified.
- FUNCTIONAL TABLE SETTINGS: To be composed of one place setting to include dishes, glassware, linen (place mat and/or cloth), and a decorative unit. No flatware. Accessories may be used.
- EXHIBITION TABLE SETTINGS: To be staged with self-supporting background, provided by the exhibitor. Exhibition table is not related to the actual service of food. Only the elements and principals of design govern the selection and placements of appointments, accessories, and the decorative unit within the background space. Dishes may be hung, elevated, to create and tell a story.
- PEDESTALS: Pedestals are varied heights, and are 24" in diameter. Arrangements must be a minimum of 32 inches high and not over 5 feet to qualify.

NICHES: The fair will furnish 12 shadow boxes daily. Niches are APPROXIMATELY 29 1/2 inches high, APPROXIMATELY 31 1/2 inches wide, and 12 inches deep. The Niche theme may be interpreted using complete floral arrangements, potted plants, other fresh plant materials, accessories, and background color. Let your imagination run wild!

FIREPLACE MANTLES: The fair will furnish 4 fireplace mantles for use by the exhibitors. Mantles should be decorated with the theme assigned in mind. Potted plants and appropriate accessories may be used.

DEPARTMENT - 7
WEDNESDAY, MAY 23, 2012

POTTED PLANTS, WALL HANGINGS, & DRY ARRANGEMENT DIVISIONS
FIREPLACES, WHEELBARROWS

ENTRIES CLOSE	EXHIBITS RECEIVED	EXHIBITS RELEASED
Monday, May 14 at 5 pm	Sunday, May 20 from 9 am to 6 pm	Monday, May 28 After 8 pm

1. Entry forms for these divisions must be in the entry office by Monday, May 14 at 5:00 p.m.
2. POTTED PLANTS, WALL HANGINGS, DRY ARRANGEMENTS, & FIREPLACES will be accepted on Sunday, May 20 from 9:00 a.m. to 6:00 p.m. THESE EXHIBITS WILL BE JUDGED MONDAY, MAY 21 at 9:00 a.m.
- WHEELBARROW AND WINE BARREL DIVISIONS will be accepted on Sunday, May 20 from 12:30 p.m. to 3:30 p.m. Fair personnel will be available to unload and place these items. Check in with the entry office upon arrival at the fairgrounds for directions to the unloading site. THESE EXHIBITS WILL BE JUDGED MONDAY, MAY 21 at 9:00 a.m. Wine Barrels will be placed for display at the Fair's discretion.
3. When help is needed for plant identification, enter in the questionable class and assistance will be given May 20 to place in correct class UPON REQUEST.
4. Containers must be clean and without foil (except for African Violets). See Floriculture Rule 6.
5. Potted Plants must be one plant per pot, unless otherwise specified.

DEPARTMENT - 7
DIVISION A - BONSAI

PREMIUMS: 1st- \$5.00 2nd- \$4.00 3rd- \$3.00

Class Class Title

- 1 Conifer - Any
- 2 Broad Leaf - Any
- 3 Group Planting, all of one specie, any style, 3 or more plants

DIVISION B - PLANTED CONTAINERS

PREMIUMS: 1st- \$5.00 2nd- \$4.00 3rd- \$3.00

Class Class Title

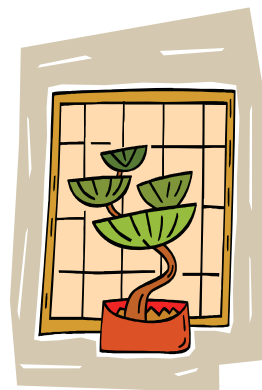
- 1 Dish Garden (large, over 12")
- 2 Dish Garden (small, less than 12" in diameter)
- 3 Indoor Planter, Any
- 4 Cactus - Best Display of several Cacti in one container
- 5 Succulents - Most artistic display in one container
- 6 Cactus/Succulent Mix - Best display in one container
- 7 Indoor Plants in bloom in unusual container
- 8 Outdoor Plants in bloom in unusual container
- 9 Indoor Plants with foliage in unusual container
- 10 Outdoor Plants with foliage in unusual container
- 11 Hanging Basket, in bloom, at least 3 varieties
- 12 Hanging Basket, herbs, at least 3, no more than 5 varieties

DIVISION C - POTTED PLANTS

PREMIUMS: 1st- \$5.00 2nd- \$4.00 3rd- \$3.00

Class Class Title

- | | |
|--|---------------------------------|
| 1 African Violet - Variegated Foliage | 6 African Violet - Dark Blue |
| 2 African Violet - Best Multiple Crown | 7 African Violet - Ruffled Leaf |
| 3 African Violet - Miniature, Any Type | |
| 4 African Violet - Best Girl Foliage | |
| 5 African Violet - Bi-color | |



- 8 African Violet - Variegated Bloom
- 9 African Violet - Any other color or type
- 10 Asparagus Fern
- 11 Azalea - Any color
- 12 Begonia - Fibrous (Dwarf Bedding, outside)
- 13 Begonia – Rex
- 14 Begonia – Rhizomatous
- 15 Begonia - Any Other, SPECIFY
- 16 Bromeliad
- 17 Cactus - one plant
- 18 Fern - Boston, True
- 19 Fern - Five-fingered
- 20 Fern – Staghorn
- 21 Fern - Any Other True, SPECIFY
- 22 Flowering Plant, Upright, not listed elsewhere
- 23 Flowering Plant, Vine - not listed elsewhere, SPECIFY
- 24 Foliage Plant, Upright - not listed elsewhere, SPECIFY
- 25 Foliage Plant, Vine - not listed elsewhere, SPECIFY
- 26 Geranium - Ivy
- 27 Geranium - Zonal
- 28 Geranium - Any Other, SPECIFY
- 29 Pelargonium - Lady Washington
- 30 Ivy - Small Leaf
- 31 Miniature Rose - Pink, in bloom
- 32 Miniature Rose - Red, in bloom
- 33 Miniature Rose - White, in bloom
- 34 Miniature Rose - Yellow, in bloom
- 35 Orchid - Any, in bloom

- 36 Philodendron - Split Leaf
- 37 Philodendron - Any Other, SPECIFY
- 38 Pothos
- 39 Spider Plant
- 40 Succulent - Jade
- 41 Succulent - Large Type, not listed elsewhere
- 42 Succulent - Small Type, not listed elsewhere
- 43 Tropical Plant in bloom, not listed elsewhere, SPECIFY
- 44 Any Herb, Cooking or Sachet

DIVISION D - BEST COLLECTION OF POTTED PLANTS

PREMIUMS: 1st- \$5.00 2nd- \$4.00 3rd- \$3.00

NOTE: Not more than 4 varieties not less than 3. Must be in separate pots.

Class Class Title

- 1 African Violets (any type)
- 2 Begonia - Potted (variety of types)
- 3 Ferns, any
- 4 Fuchsia (in bloom)
- 5 Geraniums - Zonal (in bloom)
- 6 Geraniums - Any Other, SPECIFY
- 7 Pelargonium (in bloom)
- 8 Herbs, 3 varieties
- 9 Impatiens
- 10 Ivies
- 11 Miniature Roses (in bloom)
- 12 Succulents
- 13 Any Other Potted Plants Collection, SPECIFY

POTTED PLANTS SCORE CARD: Cultural Perfection 35%, Size of Plants 20%, Distinction 15%, Rarity 15%, Shape (according to variety) 15%.

DIVISION E - WALL HANGINGS & DRY ARRANGEMENTS - OPEN

PREMIUMS: 1st- \$8.00 2nd- \$6.00 3rd- \$4.00

Class Class Title

- 1 W/H – Frame of Reference
- 2 W/H – Inspired Salvage
- 3 W/H – Circular Thinking
- 4 D/A – Fun With Junk
- 5 D/A – “Foiling” Around
- 6 D/A – Take A Bough
- 7 W/H - Junior – Frame of Reference
- 8 D/A - Junior – Fun With Junk

DIVISION F - MINIATURES - ALL DRY MATERIAL (Not over 6 in)

PREMIUMS: 1st- \$5.00 2nd- \$4.00 3rd- \$3.00

Class Class Title

- 1 Blooming Gems
- 2 In A Nutshell, Maybe Two
- 3 Lucky Charm
- 4 Nibbles & Bits
- 5 Junior: Seaside



SCORECARD FOR FLOWER ARRANGEMENTS: Conformance 10%, Design 35%, Color Harmony 20%, Distinction 15%, Expression 20%.

DEPARTMENT - 7

DIVISION G - FIREPLACE - OPEN

PREMIUMS: 1st- \$25.00 2nd- \$20.00 3rd- \$15.00 4th- \$12.00

Class Class Title

- 1 Tuscan Countryside

Limited to 4 fireplace vignette scenes. Assigned on a first come, first serve basis upon receipt of the entry form.

SCORECARD FOR FIREPLACES: Artistic Arrangement 50%; Variety of Plant Material 15%; Accessories 15%; Completeness 20%.

DEPARTMENT - 7

DIVISION H - WHEELBARROWS

PREMIUMS: 1st- \$50.00 2nd- \$45.00 3rd- \$40.00 4th- \$35.00 5th- \$30.00

Class Class Title

- 1 Spilling Blossoms
- 2 Contrasting Foliage



1. Open to groups or individuals.
2. Any type wheelbarrow. Wheelbarrow to be provided by exhibitor. Please make sure exhibitor's name & phone number is on wheelbarrow.
3. May use accessories.
4. Wheelbarrows should be mostly completed and ready for placement when brought in. Accessories may be put in place at time wheelbarrows are accepted.
5. Wheelbarrows will be accepted in the Floriculture building. Exhibit area will be assigned to each competitor.

DEPARTMENT - 7

DIVISION I - WINE BARREL GARDEN

PREMIUMS: 1st- \$50.00 2nd- \$45.00 3rd- \$40.00 4th- \$35.00 5th- \$30.00

Use standard 1/2 cut Wine Barrel. Liners and filler may be used to keep the Wine Barrel light. After judging some may be moved to another location.

Class Class Title

- 1 Youth - Wine Barrel Garden – Exhibitor’s Choice
- 2 Adult - Wine Barrel Garden – Exhibitor’s Choice

SCORECARD FOR WHEELBARROWS & WINE BARRELS:

Artistic Arrangement 50%; Variety of Plant Material 20%; Harmony 15%; Completeness 15%.

**DEPARTMENT - 7
GARDENS**

ENTRIES CLOSE Tuesday, April 17 at 5 pm	EXHIBITS RECEIVED Must be in place May 24 by 10:00 am	EXHIBITS RELEASED Monday, May 28 after 8 pm
---	---	---

1. All individuals, organizations, churches, lodges, clubs, etc. are eligible to compete.
2. Gardens will be judged Thursday, May 24.
3. A card in an inconspicuous spot should contain the names of materials used in gardens.
4. Any accessories used must be secured, kept in working order, and shall remain in the garden for the duration of the Fair or premiums may be withheld.
5. Plant material used in garden must be living or kept fresh for the duration of the Fair.
6. A uniformly lettered sign 24 inches by 18 inches with the name of the competing individual, group, or organization should be posted on exhibit soon after judging.

DIVISION J - GARDENS - OPEN

PREMIUMS: 1st- \$150.00 2nd- \$140.00 3rd- \$130.00 4th- \$120.00

CLASS ENTRY FEE: 15.00

Class Class Title

- 1 Old Time Cottage Charm

Most unusual or unique garden fitting the theme. Use flowers and potted plants that you would find in such a garden. Any accessories appropriate to setting permitted.

SCORE CARD FOR GARDENS: Design 20%, Plant Material, Selection, and Culture 25%, Proportion to Scale 20%, Appropriateness 10%, Condition 10%, Accessories 10%, Lighting 5%.

DEPARTMENT 8 – FLORICULTURE, THURSDAY, MAY 24, 2012

ENTRIES CLOSE
Wednesday, May 23
at 3 pm

EXHIBITS RECEIVED
Thursday, May 24
7 am to 10:00 am

EXHIBITS RELEASED
Friday, May 25
7 am to 10:00 am

DIVISION A - CUT FLOWERS (3 stems each, except as noted)

PREMIUMS: 1st- \$5.00 2nd- \$4.00 3rd- \$3.00

Class Class Title

- 1 Columbine - Mixed or One Color
- 2 Petunia - Bedding, One Color
- 3 Petunia - Double, Mixed Color
- 4 Petunia - Double, One Color
- 5 Petunia - Ruffled, Mixed Color, Single
- 6 Petunia - Ruffled, One Color, California Giant
- 7 Petunia - White Double
- 8 Petunia - White Single
- 9 Petunia - Any Other, Specify
- 10 Snapdragon - Butterfly
- 11 Snapdragon - Red
- 12 Snapdragon - Shades of Pink
- 13 Snapdragon - Shades of Yellow
- 14 Snapdragon - Shades of Bronze
- 15 Snapdragon - White
- 16 Snapdragon - Not listed elsewhere, Specify

DIVISION B - ARRANGEMENTS - MASTER

PREMIUMS: 1st- \$12.00 2nd- \$10.00 3rd- \$8.00

Class Class Title

- 1 A Touch of Glass
- 2 All Wired Up
- 3 "Wooden" It Be Nice

DIVISION C - ARRANGEMENTS - ADVANCED

PREMIUMS: 1st- \$12.00 2nd- \$10.00 3rd- \$8.00

Class Class Title

- 1 Glass Act
- 2 Down To The Wire
- 3 Woodwork

DIVISION D - ARRANGEMENTS - INTERMEDIATE

PREMIUMS: 1st- \$12.00 2nd- \$10.00 3rd- \$8.00

Class Class Title

- 1 Smooth As Glass
- 2 Call Of The "Wire"
- 3 Wooden Wonder

DIVISION E - ARRANGEMENTS - NOVICE

PREMIUMS: 1st- \$12.00 2nd- \$10.00 3rd- \$8.00

Class Class Title

- 1 Glass Menagerie
- 2 High Wire Act
- 3 Wacky, Wonderful Wood

DEPARTMENT - 8

DIVISION F - NICHEs - OPEN

PREMIUMS: 1st- \$20.00 2nd- \$18.00 3rd- \$15.00
4th- \$13.00 5th- \$10.00

Class Class Title

- 1 Carousels & Memories

DIVISION G - CENTERPIECE

PREMIUMS: 1st- \$20.00 2nd- \$18.00 3rd- \$15.00
4th- \$13.00 5th- \$10.00

Class Class Title

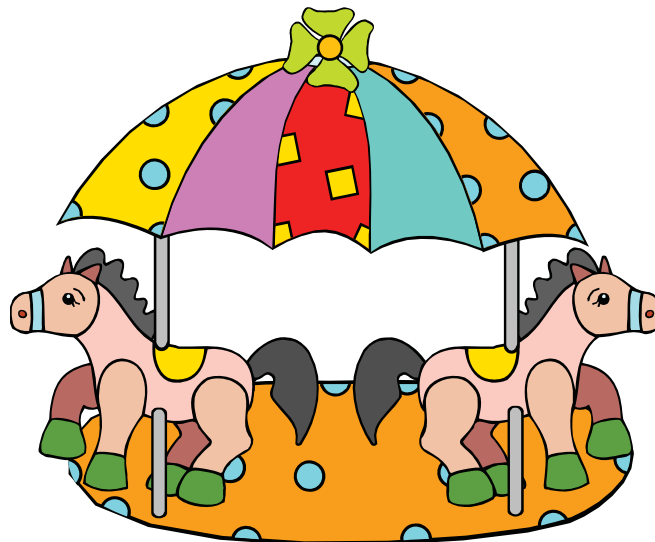
- 1 Mad Hatter's Party

DIVISION H - TABLE SETTINGS - FUNCTIONAL

PREMIUMS: 1st- \$20.00 2nd- \$18.00 3rd- \$15.00
4th- \$13.00 5th- \$10.00

Class Class Title

- 1 Spaghetti Feed



DEPARTMENT 9 – FLORICULTURE, FRIDAY, MAY 25, 2012

ENTRIES CLOSE
Thursday, May 24
at 3 pm

EXHIBITS RECEIVED
Friday, May 25
7 am to 10:00 am

EXHIBITS RELEASED
Saturday, May 26
7 am to 10:00 am

DIVISION A - CUT FLOWERS (3 stems except as noted)

PREMIUMS: 1st- \$5.00 2nd- \$4.00 3rd- \$3.00

Class Class Title

- 1 Carnation
- 2 Daisy - Marguerite, Single
- 3 Daisy - Marguerite, Double
- 4 Daisy - Esther Reed, Single
- 5 Daisy - Esther Reed, Double
- 6 Daisy - Coreopsis, Single
- 7 Daisy - Coreopsis, Double
- 8 Daisy - Shasta, Single
- 9 Daisy - Shasta, Double
- 10 Daisy - Transvaal, Gerbera, dark, double
- 11 Daisy - Transvaal, Gerbera, light, double
- 12 Daisy - Transvaal, Gerbera, dark, single
- 13 Daisy - Transvaal, Gerbera, light, single
- 14 Heuchera - Coral Bells

- 15 Larkspur - Any
- 16 Penstemon - Grandiflora, Gloxinia type
- 17 Pinks - Mixed or One Color
- 18 Verbena - Red
- 19 Verbena - Mixed
- 20 Verbena - Any Other, Specify
- 21 Zinnias
- 22 Pansies - Blue, with foliage
- 23 Pansies - Lavender, with foliage
- 24 Pansies - Maroon (Red), with foliage
- 25 Pansies - Purple, with foliage
- 26 Pansies - White, with foliage
- 27 Pansies - Yellow, with foliage
- 28 Pansies - Mixed, with foliage

DIVISION C - ARRANGEMENTS – MASTER

PREMIUMS: 1st- \$12.00 2nd- \$10.00 3rd- \$8.00

Class Class Title

- 1 An Asian Influence
- 2 Breaking The Waves
- 3 It Takes Two To Tango

DIVISION D - ARRANGEMENTS - ADVANCED

PREMIUMS: 1st- \$12.00 2nd- \$10.00 3rd- \$8.00

Class Class Title

- 1 Bombay Bazaar
- 2 Shoreside Stroll
- 3 Twice As Nice

DIVISION E - ARRANGMENTS - INTERMEDIATE

PREMIUMS: 1st- \$12.00 2nd- \$10.00 3rd- \$8.00

Class Class Title

- 1 Far East Elegance
- 2 Rocky Seashore
- 3 Dynamic Duo

DIVISION F - ARRANGEMENTS – NOVICE

PREMIUMS: 1st- \$12.00 2nd- \$10.00 3rd- \$8.00

Class Class Title

- 1 Aztec Colors
- 2 Seaside Serenity
- 3 Double Trouble

DIVISION G - NICHES - OPEN

PREMIUMS: 1st- \$20.00 2nd- \$18.00 3rd- \$15.00
4th- \$13.00 5th- \$10.00

Class Class Title

- 1 Mining Adventures

DIVISION H - PEDESTALS - OPEN

PREMIUMS: 1st- \$20.00 2nd- \$18.00 3rd- \$15.00
4th- \$13.00 5th- \$10.00

Class Class Title

- 1 The Sky's The Limit

DIVISION I - TABLE SETTINGS - OPEN - EXHIBITION ONLY

PREMIUMS: 1st- \$20.00 2nd- \$18.00 3rd- \$15.00
4th- \$13.00 5th- \$10.00

Class Class Title

- 1 Island Estate



DEPARTMENT 10 – FLORICULTURE, SATURDAY, MAY 26, 2012

ENTRIES CLOSE
Friday, May 25
at 3 pm

EXHIBITS RECEIVED
Saturday, May 26
7 am to 10:00 am

EXHIBITS RELEASED
Sunday, May 27
7 am to 10:00 am

DIVISION A - CUT FLOWERS (3 stems except as noted)

PREMIUMS: 1st- \$5.00 2nd- \$4.00 3rd- \$3.00

Class Class Title

- 1 Sweet Peas - Blue
- 2 Sweet Peas - Lavender
- 3 Sweet Peas - Maroon
- 4 Sweet Peas - Pink
- 5 Sweet Peas - Red
- 6 Sweet Peas - Rose
- 7 Sweet Peas - Salmon
- 8 Sweet Peas - White
- 9 Sweet Williams - Mixed
- 10 Sweet Williams - Pink
- 11 Sweet Williams - Red
- 12 Sweet Williams - White
- 13 Violas - Mixed, with foliage
- 14 Calendula - Light Yellow
- 15 Calendula - Orange
- 16 Canterbury Bell, 2 stems
- 17 Delphinium - Any Color, one stem
- 18 Fox Glove, 2 stems
- 19 Gardenia, any type
- 20 Hydrangea, Common, any color, one spray or stem
- 21 Hydrangea, Lace Cap, any color, one spray or stem
- 22 Hydrangea, Oak Leaf, any color, one spray or stem
- 23 Lilies - Calla, any color, 2 stems
- 24 Lilies - DeGraff Hybrid, any color, 2 stems

NOTE: In Div. A, more than 1 vase may be used for larger flowers

DIVISION B - ARRANGEMENTS - MASTER

PREMIUMS: 1st- \$12.00 2nd- \$10.00 3rd- \$8.00

Class Class Title

- 1 Black, White, & Read All Over (use newspaper)
- 2 Creole Celebration
- 3 Feather Dance



DIVISION C - ARRANGEMENTS - ADVANCED

PREMIUMS: 1st- \$12.00 2nd- \$10.00 3rd- \$8.00

Class Class Title

- 1 Black, White, & Read All Over (use newspaper)
- 2 A Night On The Town
- 3 Golden Gate

DIVISION D - ARRANGEMENTS - INTERMEDIATE

PREMIUMS: 1st- \$12.00 2nd- \$10.00 3rd- \$8.00

Class Class Title

- 1 Black, White, & Read All Over (use newspaper)
- 2 A Toss Of The Dice
- 3 Lil' Old Winemaker

DIVISION E - ARRANGEMENTS - NOVICE

PREMIUMS: 1st- \$12.00 2nd- \$10.00 3rd- \$8.00

Class Class Title

- 1 Black, White, & Read All Over (use newspaper)
- 2 One For The Road
- 3 Keeper Of The Keys

DIVISION F - NICHES - OPEN

PREMIUMS: 1st- \$20.00 2nd- \$18.00 3rd- \$15.00
4th- \$13.00 5th- \$10.00

Class Class Title

- 1 Wedding "Daze"

DIVISION G - CENTERPIECE

PREMIUMS: 1st- \$20.00 2nd- \$18.00 3rd- \$15.00
4th- \$13.00 5th- \$10.00

Class Class Title

- 1 Fiestas & Fandangos

DIVISION H - TABLESETTINGS - OPEN - FUNCTIONAL

PREMIUMS: 1st- \$20.00 2nd- \$18.00 3rd- \$15.00
4th- \$13.00 5th- \$10.00

Class Class Title

- 1 Storybook (include book)

Junior Exhibitors Please Note: Arrangements entered in Junior Classes must be made by the Junior, in whose name the exhibit is entered, without adult assistance and must be made in a location designated by the Superintendent of Floriculture. Any deviation from this rule may disqualify the entry.

* * * * JUNIOR ARRANGEMENTS * * * *

DIVISION I - ARRANGEMENTS - Juniors 11 years & under

PREMIUMS: 1st- \$8.00 2nd- \$6.00 3rd- \$5.00

Class Class Title

- 1 Black, White, & Read All Over (use newspaper)
- 2 Cat's Meow
- 3 Quilting Bee

SCORE CARD FOR JUNIOR ARRANGEMENTS: General Effect 25%, Neatness and Condition 25%, Design, including Balance and Color 25%, Originality 25%.

DIVISION J - ARRANGEMENTS - Juniors 12 to 17 years

PREMIUMS: 1st- \$8.00 2nd- \$6.00 3rd- \$5.00

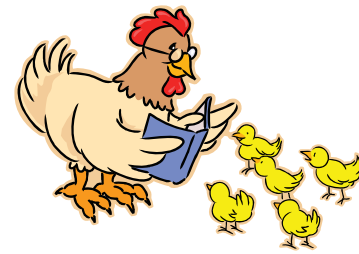
Class Class Title

- 1 Black, White, & Read All Over (use newspaper)
- 2 Boots Were Made For Plantin'
- 3 Nature's Fireworks

See next page for niches & tablesettings

DIVISION K - NICHE & TABLESETTINGS, JUNIOR
 PREMIUMS: 1st- \$12.00 2nd- \$10.00 3rd- \$8.00

- Class Class Title
 1 Niche – Wedding “Daze”
 2 T/S – Storybook (include book)



DEPARTMENT 11 – FLORICULTURE, SUNDAY, MAY 27, 2012

ENTRIES CLOSE
 Saturday, May 26
 at 3 pm

EXHIBITS RECEIVED
 Sunday, May 27
 7 am to 10:00 am

EXHIBITS RELEASED
 Monday, May 28
 7 am to 10:00 am

DIVISION A - CUT FLOWERS (One spray or stem)
 PREMIUMS: 1st- \$5.00 2nd- \$4.00 3rd- \$3.00

- Class Class Title
 1 Roses, Climbing
 2 Roses, Grandiflora, Mixed or One Color
 3 Roses, Floribunda, Pink
 4 Roses, Floribunda, Red
 5 Roses, Floribunda, Salmon
 6 Roses, Floribunda, White
 7 Roses, Floribunda, Yellow
 8 Roses, Polyanthus, Pink
 9 Roses, Polyanthus, Red
 10 Roses, Polyanthus, Salmon
 11 Roses, Hybrid Tea, Dark Red
 12 Roses, Hybrid Tea, Lavender
 13 Roses, Hybrid Tea, Peace
 14 Roses, Hybrid Tea, Pink
 15 Roses, Hybrid Tea, Red
 16 Roses, Hybrid Tea, Rose
 17 Roses, Hybrid Tea, Salmon
 18 Roses, Hybrid Tea, White
 19 Roses, Hybrid Tea, Yellow
 20 Roses, Single Type
 21 Roses, Bicolor, not listed elsewhere

DIVISION B - ARRANGEMENTS - MASTER
 PREMIUMS: 1st- \$12.00 2nd- \$10.00 3rd- \$8.00

- Class Class Title
 1 Rose & Shine
 2 Flea Market Favorite

DIVISION B – ARRANGEMENTS, MASTER, cont.
 3 Music In The Air

DIVISION C - ARRANGEMENTS - ADVANCED
 PREMIUMS: 1st- \$12.00 2nd- \$10.00 3rd- \$8.00

- Class Class Title
 1 With All My Heart (roses)
 2 Flea Market Favorite
 3 Making “Notes”

DIVISION D - ARRANGEMENTS - INTERMEDIATE
 PREMIUMS: 1st- \$12.00 2nd- \$10.00 3rd- \$8.00

- Class Class Title
 1 Ins & Outs Of Roses
 2 Flea Market Favorite
 3 Singing The Blues

DIVISION E - ARRANGEMENTS - NOVICE
 PREMIUMS: 1st- \$12.00 2nd- \$10.00 3rd- \$8.00

- Class Class Title
 1 Romantica Roses
 2 Flea Market Favorite
 3 The Sound Of Music

DIVISION F - NICHE - OPEN
 PREMIUMS: 1st- \$20.00 2nd- \$18.00 3rd- \$15.00
 4th- \$13.00 5th- \$10.00

- Class Class Title
 1 California’s Heartland

Junior Exhibitors Please Note: Arrangements entered in Junior Classes must be made by the Junior, in whose name the exhibit is entered, without adult assistance and must be made in a location designated by the Superintendent of Floriculture. Any deviation from this rule may disqualify the entry.

***** JUNIOR ARRANGEMENTS *****

DIVISION G - ARRANGEMENTS - Junior 11 years and under
 PREMIUMS: 1st- \$8.00 2nd- \$6.00 3rd- \$5.00

- Class Class Title
 1 Sweet Rosie O’Grady
 2 Flea Market Favorite
 3 Candyland

DIVISION H - ARRANGEMENTS - Junior 12 to 17 years
 PREMIUMS: 1st- \$8.00 2nd- \$6.00 3rd- \$5.00

- Class Class Title
 1 Yellow Rose Of Texas
 2 Flea Market Favorite
 3 Magnificent Seven

DIVISION I - NICHE - JUNIOR
 PREMIUMS: 1st- \$12.00 2nd- \$10.00 3rd- \$8.00

- Class Class Title
 1 California’s Heartland

DEPARTMENT 12 – FLORICULTURE, MONDAY, MAY 28, 2012

ENTRIES CLOSE
Sunday, May 27
at 3 pm

EXHIBITS RECEIVED
Monday, May 28
7 am to 10:00 am

EXHIBITS RELEASED
Monday, May 28
after 8 pm

DIVISION A - CUT FLOWERS (3 stems except as noted)

PREMIUMS: 1st- \$5.00 2nd- \$4.00 3rd- \$3.00

Class Class Title

- 1 Bottle Brush
- 2 Day Lily - Hermerocallis, Dark
- 3 Day Lily - Hermerocallis, Light
- 4 Day Lily - Hermerocallis, Pink or Melon
- 5 Flowering Shrub, not listed elsewhere
- 6 Gaillardia
- 7 Marigold - Mixed or One Color
- 8 Mock Orange - Single
- 9 Mock Orange - Double
- 10 Poppies - Any shade, single
- 11 Poppies - Any shade, double
- 12 Any Other Flower, Disc Form
- 13 Any Other Flower, Spike Form
- 14 Any Other Flower, Spray Form

DIVISION B - COLLECTIONS

PREMIUMS: 1st- \$5.00 2nd- \$4.00 3rd- \$3.00

Class Class Title

- 1 Daylilies - Hemerocallis, 6 varieties, 1 stem of each
- 2 Pansies, with foliage, light shades, 4 bowls 3-4 stems each
- 3 Pansies, with foliage, dark shades, 4 bowls 3-4 stems each
- 4 Roses, with 2 leaves, 6 varieties, 1 stem of each
- 5 Sweet Peas, without foliage, 4 vases, 3-4 stems in each

DIVISION C - ARRANGEMENTS - MASTER

PREMIUMS: 1st- \$12.00 2nd- \$10.00 3rd- \$8.00

Class Class Title

- 1 In The Frame
- 2 Game Time (Exhibitor's Choice)

DIVISION D - ARRANGEMENTS – ADVANCED

PREMIUMS: 1st- \$12.00 2nd- \$10.00 3rd- \$8.00

Class Class Title

- 1 Boxed In
- 2 Game Time (Exhibitor's Choice)

DIVISION E - ARRANGEMENTS - INTERMEDIATE

PREMIUMS: 1st- \$12.00 2nd- \$10.00 3rd- \$8.00

Class Class Title

- 1 Right Frame Of Mind
- 2 Game Time (Exhibitor's Choice)

DIVISION F - ARRANGEMENTS - NOVICE

PREMIUMS: 1st- \$12.00 2nd- \$10.00 3rd- \$8.00

Class Class Title

- 1 Framed View
- 2 Game Time (Exhibitor's Choice)

DIVISION G - NICHES - OPEN

PREMIUMS: 1st- \$20.00 2nd- \$18.00 3rd- \$15.00
4th- \$13.00 5th- \$10.00

Class Class Title

- 1 Coastal Moods

DIVISION H - TABLE SETTING - OPEN - FUNCTIONAL

PREMIUMS: 1st- \$20.00 2nd- \$18.00 3rd- \$15.00
4th- \$13.00 5th- \$10.00

Class Class Title

- 1 All American Clambake

DIVISION I - CENTERPIECE

PREMIUMS: 1st- \$20.00 2nd- \$18.00 3rd- \$15.00
4th- \$13.00 5th- \$10.00

Class Class Title

- 1 Driftwood Inspired

*** JUNIOR ARRANGEMENTS ***

DIVISION J - ARRANGEMENTS - Juniors 11 years and under

PREMIUMS: 1st- \$8.00 2nd- \$6.00 3rd- \$5.00

Class Class Title

- 1 Gimme Five!
- 2 Board Game

DIVISION K - ARRANGEMENTS - Junior 12 to 17 years

PREMIUMS: 1st- \$8.00 2nd- \$6.00 3rd- \$5.00

Class Class Title

- 1 All In A Row
- 2 Board Game

DIVISION L - NICHES & TABLESETTINGS, Junior

PREMIUMS: 1st- \$12.00 2nd- \$10.00 3rd- \$8.00

Class Class Title

- 1 Niche – Coastal Moods
- 2 T/S – All American Clambake

See Saturday for Junior Arrangement Scorecard