

## DEPARTMENT 21 - CREATIVE ARTS

ENTRIES CLOSE  
Tuesday, April 17  
at 5 pm

EXHIBITS RECEIVED  
Fri, May 18-9 am – 7 pm  
or Sat, May 19-9 am - noon

EXHIBITS RELEASED  
Tuesday, May 29  
8 am to 4 pm

1. Exhibits will not be accepted after 12 noon on Saturday, May 19, and WILL NOT BE ACCEPTED WITHOUT THE EXHIBIT TAG PROVIDED BY THE FAIR. Any exhibit received with an altered exhibit tag will be DISQUALIFIED unless changes have been authorized and performed by the Fair Entry Office.
2. Exhibits will not be released before 8:00 am Tuesday, May 29 and must be claimed by 4:00 pm Tuesday, May 29.
3. Only projects made in school under the supervision of a Creative Arts Teacher may be entered.
4. Projects must have been started and completed during the 12 month period preceding the fair.
5. Projects made from assembly kits are not eligible. Component parts should be made by the exhibitor wherever reasonably possible, and judges will rate accordingly.
6. A project may be entered for one award only. No exhibitor may enter more than one article made from the same pattern.
7. Each exhibitor is limited to two entries per class.
8. AGE & GRADE IN SCHOOL MUST BE STATED ON THE ENTRY FORM.
9. The Fair reserves the right to remove from display items which may be deemed vulgar or in poor taste for display in the Creative Arts - Industrial Education Building.
10. Exhibitor Tags, furnished by the fair, must be firmly attached to each exhibit.
11. All exhibits must be complete and must meet legal requirements to operate.
12. The Silver Dollar Fair will present trophies, Best of Show ribbons, and \$100.00 to the overall Best of Show in the following categories: (1) Miscellaneous Art Projects, (2) Etched & Stained Glass, (3) Sculpture, (4) Ceramics, (5) Special Education, (6) Oil & Acrylic Paintings, (7) Commercial Design & Graphics, (8) Pen & Ink Drawings, (9) Graphite Pencil Drawings, (10) Color Pencil Drawings, (11) Combined Techniques, (12) Watercolor, Pastel, & Airbrush, (13) Computer Art, (14) Darkroom Photography, and (15) Digital Photography.

13. Each school is responsible for displaying their own exhibits in booth form.

DANISH SYSTEM OF JUDGING			
GROUP	QUALITY	SCORE	RIBBON
First	Superior	92% - 100%	Blue
Second	Good	84% - 91%	Red
Third	Average, Acceptable	70% - 83%	White
Fourth	Poor, Undesirable	69% or less	Pink

The Danish System of Judging is based upon established standards of quality for each type of product. In this system, each exhibit is judged according to how well it meets that standard rather than how it compares with other exhibits.

### DIVISION A - MISCELLANEOUS ART PROJECTS

DANISH SYSTEM OF JUDGING, RIBBON AWARDS ONLY 4 LEVELS

Class Class Title

- 1 Bas Relief (2-d wood carving)
- 2 Calligraphy
- 3 Collage
- 4 Mask, Other than Ceramic
- 5 Paper Cuts
- 6 Silk Screen Printing
- 7 Scratchboard
- 8 Two-dimensional, Black and White
- 9 Two-dimensional, Tissue Paper

10 Wall Plaque, Decorative

11 Any Other Miscellaneous Project, SPECIFY

### DIVISION B - ETCHED GLASS

DANISH SYSTEM OF JUDGING, RIBBON AWARDS ONLY 4 LEVELS

Class Class Title

- 1 Etched Glass, Surface
- 2 Etched Glass, Relief
- 3 Etched Glass, Mirror
- 4 Etched Glass, Three Dimensional
- 5 Etched Glass, Any Other

**DIVISION C - STAINED GLASS**

DANISH SYSTEM OF JUDGING, RIBBON AWARDS ONLY 4 LEVELS

Class Class Title

- 1 Stained Glass, Flat
- 2 Stained Glass, Three Dimensional
- 3 Stained Glass, Lamp
- 4 Stained Glass, Any Other, SPECIFY

**DIVISION D - SPECIAL EDUCATION CLASSES**

DANISH SYSTEM OF JUDGING, RIBBON AWARDS ONLY 4 LEVELS

Class Class Title

- 1 Ceramics
- 2 Drawing
- 3 Woodcraft
- 4 Any Other, SPECIFY

**DIVISION E - CERAMICS**

DANISH SYSTEM OF JUDGING, RIBBON AWARDS ONLY 4 LEVELS

Class Class Title

- 1 Coil Method, Concealed Coil
- 2 Coil Method, Exposed Coil
- 3 Combined Technique, Slab/Coil
- 4 Combined Technique, Wheel/Hand Building
- 5 Combined Technique, Any Other Combination, SPECIFY
- 6 Drape Method
- 7 Found Mold Method
- 8 High Fire, any item
- 9 Mask
- 10 Pierced Design
- 11 Pinch Pot
- 12 Slab Method, 2-D Tiles
- 13 Slab Method, 3-D Boxes
- 14 Slab Method, Other
- 15 Wheel Thrown, Single Item
- 16 Wheel Thrown, Two or More Pieces
- 17 Wheel Thrown, Altered
- 18 Any Other Ceramic Technique, SPECIFY

**DIVISION F - SCULPTURE**

DANISH SYSTEM OF JUDGING, RIBBON AWARDS ONLY 4 LEVELS

Class Class Title

- 1 Clay, Animal
- 2 Clay, Fantasy
- 3 Clay, Nature
- 4 Clay, People
- 5 Clay, Any Other, SPECIFY
- 6 Abstract, Any Material
- 7 Mask
- 8 Wood
- 9 Any Other Sculpture, SPECIFY

**DIVISION G - OIL PAINTING**

DANISH SYSTEM OF JUDGING, RIBBON AWARDS ONLY 4 LEVELS

Class Class Title

- 1 Landscape/Seascape
- 2 People/Portrait
- 3 Waterfowl/Wild Life
- 4 Fantasy
- 5 Any Other Oil Painting

**DIVISION H - ACRYLIC PAINTINGS**

DANISH SYSTEM OF JUDGING, RIBBON AWARDS ONLY 4 LEVELS

Class Class Title

- 1 Landscape/Seascape
- 2 People/Portrait
- 3 Waterfowl/Wild Life
- 4 Fantasy
- 5 Any Other Acrylic Painting

**DIVISION I - COMBINED TECHNIQUES**

DANISH SYSTEM OF JUDGING, RIBBON AWARDS ONLY 4 LEVELS

Class Class Title

- 1 Airbrush/Pencil
- 2 Airbrush/Color Pencil
- 3 Any Other Airbrush Combination, SPECIFY
- 4 Water Color/Pen and Ink
- 5 Water Color/Pencil or Color Pencil
- 6 Ink/Color Pencil
- 7 Pencil/Color Pencil
- 8 Any Other Combination Using Ink, SPECIFY
- 9 Any Other Combination of Paint, SPECIFY
- 10 Any Other Combination using Chalk, SPECIFY
- 11 Any Other Combination, SPECIFY

**DIVISION J - PEN AND INK**

DANISH SYSTEM OF JUDGING, RIBBON AWARDS ONLY 4 LEVELS

Class Class Title

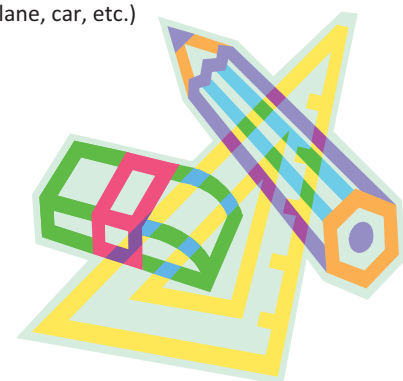
- 1 Animal
- 2 Architecture
- 3 Fantasy
- 4 Landscape - Nature
- 5 Mechanical Object (plane, car, etc.)
- 6 Portrait
- 7 Sports/Action
- 8 Still Life
- 9 Any Other Pen and Ink, SPECIFY

**DIVISION K - GRAPHITE PENCIL DRAWING**

DANISH SYSTEM OF JUDGING, RIBBON AWARDS ONLY 4 LEVELS

Class Class Title

- 1 Abstract
- 2 Animal
- 3 Architecture
- 4 Birds, Ducks, Geese
- 5 Fantasy
- 6 Flowers
- 7 Landscape
- 8 Life Forms
- 9 Mechanical Object (plane, car, etc.)
- 10 Nature
- 11 People/Portrait
- 12 Still Life
- 13 Any Other, SPECIFY



**DIVISION L - COLOR PENCIL DRAWING**

DANISH SYSTEM OF JUDGING, RIBBON AWARDS ONLY 4 LEVELS

Class	Class Title
1	Abstract
2	Animal
3	Architecture
4	Birds, Ducks, Geese
5	Fantasy
6	Flowers
7	Landscape
8	Life Forms
9	Mechanical Object (plane, car, etc.)
10	Nature
11	People/Portrait
12	Still Life
13	Any Other, SPECIFY

**DIVISION M - COMMERCIAL DESIGN**

DANISH SYSTEM OF JUDGING, RIBBON AWARDS ONLY 4 LEVELS

Class	Class Title
1	Advertising-Commercial Art Illustration
2	Card
3	Cartooning
4	Fashion Design
5	Lettering
6	Poster, Album Cover, Etc.
7	Word or Autograph
8	Any Other, SPECIFY

**DIVISION N - GRAPHICS**

DANISH SYSTEM OF JUDGING, RIBBON AWARDS ONLY 4 LEVELS

Class	Class Title
1	Block Printing
2	Silk Screen
3	Any Other, SPECIFY

**DIVISION O - WATERCOLOR**

DANISH SYSTEM OF JUDGING, RIBBON AWARDS ONLY 4 LEVELS

Class	Class Title
1	Abstract/Fantasy
2	Architecture
3	Animals
4	Birds/Waterfowl
5	Landscape
6	Nature
7	People
8	Still Life
9	Any Other, SPECIFY

**DIVISION P - PASTEL & CHARCOAL**

DANISH SYSTEM OF JUDGING, RIBBON AWARDS ONLY 4 LEVELS

Class	Class Title
1	Abstract
2	Animal
3	Landscape/Seascape
4	Nature
5	Still Life
6	Portraits
7	Any Other, SPECIFY

**DIVISION Q - AIRBRUSH**

DANISH SYSTEM OF JUDGING, RIBBON AWARDS ONLY 4 LEVELS

Class	Class Title
1	Abstract
2	Portrait
3	Still Life
4	Any Other, SPECIFY

**DIVISION R - COMPUTER GENERATED ART, ORIGINAL**

DANISH SYSTEM OF JUDGING, RIBBON AWARDS ONLY 4 LEVELS

Class	Class Title
1	Architecture
2	Fantasy
3	Landscape
4	Nature
5	People/Portrait
6	Any Other, SPECIFY

**DIVISION S - COMPUTER GENERATED ART, ENHANCED**

DANISH SYSTEM OF JUDGING, RIBBON AWARDS ONLY 4 LEVELS

MUST SUBMIT ORIGINAL PHOTO/DOCUMENT WITH ENHANCED COPY.

Class	Class Title
1	Architecture
2	Fantasy
3	Landscape
4	Nature
5	People/Portrait
6	Any Other, SPECIFY

**DIVISION T - COMPUTER ASSISTED DESIGN**

DANISH SYSTEM OF JUDGING, RIBBON AWARDS ONLY 4 LEVELS

Class	Class Title
1	Calendar
2	Poster/Flyer
3	Letterhead
4	Business Card
5	Greeting Card (All artwork & writing must be original)

