

DEPARTMENT 20 - INDUSTRIAL EDUCATION

FOREWORD

Industrial Education is an integral part of the total program of education in the public schools of California. The branches of learning represented by industrial education are industrial arts education, and vocational trade and technical. Industrial arts education provides for personal identification with the work of industry, for satisfactions that are found in creative craftsmanship, and for developing values which are important to the consumers of goods and services. Vocational trade and technical education develops occupational competencies that prepare people to enter employment in specific industrial and service occupations, or to advance to a higher level of employment.

Staff members of the Bureau of Industrial Education, California State Department of Education; members of the professional organization, California Industrial Education Association; and teachers in the field of industrial education in the local schools recognize that student craftsmanship, design and creativeness are further stimulated by displays and awards programs at fairs.

Junior Department Entry Forms (pink) shall be used for ALL entries in this department. The teacher must sign each entry form. Please read all Local and State Rules in the front part of this book. PHOTOCOPIED WHITE FORMS ARE ACCEPTABLE.

ENTRIES CLOSE Tuesday, April 17 at 5 pm	EXHIBITS RECEIVED Fri, May 18-9 am – 7 pm or Sat, May 19 – 9 am – noon	EXHIBITS RELEASED Tuesday, May 29 8 am to 4 pm
---	--	--

1. Exhibits will not be accepted after 12 noon on Saturday, May 19 and WILL NOT BE ACCEPTED WITHOUT THE EXHIBIT TAG PROVIDED BY THE FAIR. Any exhibit received with an altered exhibit tag will be DISQUALIFIED unless changes have been authorized and performed by the Fair Entry Office.
2. Exhibits will not be released before 8:00 am Tuesday, May 29 and must be claimed by 4:00 pm Tuesday, May 29.
3. Only projects made in school under supervision of an Industrial Arts or Vocational Trade and Technical Teacher may be entered.
4. Projects must have been started and completed during the 12 month period preceding the fair.
5. Projects made from assembly kits are not eligible. Component parts should be made by the exhibitor wherever reasonably possible, and judges will rate accordingly.
6. A project may be entered for one award only. No exhibitor may enter more than one article made from the same pattern.
7. Each exhibitor is limited to two entries per class.
8. AGE & GRADE IN SCHOOL MUST BE STATED ON THE ENTRY FORM.
9. The Fair reserves the right to remove from display items which may be deemed vulgar or in poor taste for display in the Creative Arts - Industrial Education Building.
10. Exhibitor Tags, furnished by the fair, must be firmly attached to each exhibit.
11. All exhibits must be complete and must meet legal requirements to operate.
12. The Silver Dollar Fair will present trophies, Best of Show ribbons, and \$100.00 to the overall Best of Show in the fields of (1) Architectural Drawing, (2) Technical/Machine Drafting, (3) Metal and (4) Wood.
13. Each school is responsible for displaying their own exhibits in booth form.

DANISH SYSTEM OF JUDGING			
GROUP	QUALITY	SCORE	RIBBON
First	Superior	92% - 100%	Blue
Second	Good	84% - 91%	Red
Third	Average, Acceptable	70% - 83%	White
Fourth	Poor, Undesirable	69% or less	Pink

The Danish System of Judging is based upon established standards of quality for each type of product. In this system, each exhibit is judged according to how well it meets that standard rather than how it compares with other exhibits.

DIVISION A - INDUSTRIAL CRAFTS - MODELS

DANISH SYSTEM OF JUDGING, RIBBON AWARDS ONLY 4 LEVELS

Class Class Title

- 1 Any Model, No Kits, support base limited to 36"x48"

DIVISION B - FOUNDRY

DANISH SYSTEM OF JUDGING, RIBBON AWARDS ONLY 4 LEVELS

Class Class Title

- 1 Center Punch
- 2 Chisel
- 3 Hammer/Meat Tenderizer
- 4 Foundry, Single Piece
- 5 Tool Box
- 6 Any Combination Project, SPECIFY
- 7 Any Other Tool, using the lathe, SPECIFY
- 8 Any Miscellaneous Tool, not listed elsewhere, SPECIFY

DIVISION C - GENERAL WOODWORKING

DANISH SYSTEM OF JUDGING, RIBBON AWARDS ONLY 4 LEVELS

Class Class Title

- 1 Bowl, Laminated
- 2 Bread or Cutting Board
- 3 Cabinet, Small
- 4 Frame, picture or mirror
- 5 Game Board
- 6 Jewelry Box
- 7 Rack: coat or hat, etc., SPECIFY
- 8 Rack: magazine, gun, wine, etc., SPECIFY
- 9 Sports Equipment, SPECIFY
- 10 Stool
- 11 Wall Plaque
- 12 Wall Clock
- 13 Any Other Small Project, 12" and under, SPECIFY
- 14 Any Other Large Project, over 12", SPECIFY

DIVISION D - FURNITURE MAKING

DANISH SYSTEM OF JUDGING, RIBBON AWARDS ONLY 4 LEVELS

Class Class Title

- 1 Bed
- 2 Book Case
- 3 Chair
- 4 China Cabinet
- 5 Chest of Drawers
- 6 Coffee Table, Combination
- 7 Coffee Table, Plain
- 8 Desk
- 9 End Table
- 10 Gun Cabinet
- 11 Hope Chest
- 12 Night Stand
- 13 Radio or TV Cabinet
- 14 Stereo/Speaker Cabinet
- 15 Table, Large
- 16 Any other item of furniture, SPECIFY

DIVISION E - WELDING

DANISH SYSTEM OF JUDGING, RIBBON AWARDS ONLY 4 LEVELS

Class Class Title

- 1 Any Sports Equipment, SPECIFY
- 2 Any Other Small Welding Project, SPECIFY
- 3 Shop Equipment, SPECIFY
- 4 Patio Table, Chairs, Benches, SPECIFY
- 5 Bumper, Grill or Roll Bar, SPECIFY
- 6 Any Other Medium Welding Project, SPECIFY
- 7 Trailer (general purpose)
- 8 Any Other Large Welding Project, SPECIFY

DIVISION F - AUTOMOTIVE

DANISH SYSTEM OF JUDGING, RIBBON AWARDS ONLY 4 LEVELS

Class Class Title

- 1 Rebuilt Auto Engine
- 2 Any Other Automotive Project, SPECIFY

THOMAS WELDING & THOMAS MANUFACTURING:
Thomas Welding & Thomas Manufacturing will present a \$50.00
cash award to the Outstanding Industrial Arts Welding Project Exhibited.

DIVISION G - WORKING (ARCHITECTURAL-CAD) DRAWINGS
 DANISH SYSTEM OF JUDGING, RIBBON AWARDS ONLY 4 LEVELS

- | | |
|-------|--|
| Class | Class Title |
| 1 | Complete House Plans (5 Drawings) |
| 2 | Electrical Plan |
| 3 | Elevation, All Sides |
| 4 | Floor Plan |
| 5 | Interior Elevation, Detail |
| 6 | Perspective |
| 7 | Plot Plan |
| 8 | Roof Plan |
| 9 | Typical Section - House Foundation |
| 10 | T Foundation |
| 11 | Any Other Architectural Drawing, SPECIFY |



DIVISION H - TECHNICAL/MACHINE DRAFTING (CAD)
 DANISH SYSTEM OF JUDGING, RIBBON AWARDS ONLY 4 LEVELS

- | | |
|-------|----------------------------------|
| Class | Class Title |
| 1 | Auxiliary View, Single or Double |
| 2 | Assembly Drawing, Any |
| 3 | Cams |
| 4 | Casting, Working Drawings |
| 5 | Inking, Assembly Drawings |
| 6 | Geometric Construction |
| 7 | Grid Reproduction |
| 8 | Lettering Practice, Standard |
| 9 | Machine, Detail Drawing |
| 10 | Mapping |

- | | |
|----|--|
| 11 | Multiview |
| 12 | Orthographic Projection, Working Drawing, Views and Dimensions |
| 13 | Pictorial Presentation, Any |
| 14 | Plot Plan |
| 15 | Schematic |
| 16 | Revolution |
| 17 | Sectional Views, Any |
| 18 | Sheetmetal, Parallel Line Development |
| 19 | Sheetmetal, Radial Line Development |
| 20 | Threads and Fasteners |
| 21 | Welding Drawing |
| 22 | Any Other, SPECIFY |

SCORE CARDS FOR JUDGING

WORKING (ARCHITECTURAL-CAD) DRAWING

Workmanship.....	30%
Appearance.....	25%
Adherence to Building Code.....	20%
Originality of Design.....	15%
Completeness of Plans.....	10%
	100%

TECHNICAL/MACHINE DRAFTING

Workmanship (Accuracy, Line Technique, Width, etc.....)	50%
General Appearance (Line Density, Placement of dimensions and views).....	25%
Completeness of Drawings (Views, Dimensions).....	25%
	100%

PRINTING

Workmanship.....	40%
Originality of Composition.....	20%
General Appearance.....	20%
Art and Design.....	20%
	100%

WOODS, METALS AND ALL OTHER CLASSES

Workmanship (Design, tool operation and finish.....)	50%
Quality of Materials.....	30%
Scope of Exhibit (Size, variety, etc.).....	20%
	100%

AUTOMOTIVE

Categories that apply shall be given equal allowance for perfect score.

- | | |
|--------------------------------|---------------------|
| 1. Workmanship (where visible) | 4. Finish |
| 2. Design | 5. Assembly |
| 3. Tool Operation | 6. Scope of Exhibit |

DEPARTMENT 21 - CREATIVE ARTS

ENTRIES CLOSE
Tuesday, April 17
at 5 pm

EXHIBITS RECEIVED
Fri, May 18-9 am – 7 pm
or Sat, May 19-9 am - noon

EXHIBITS RELEASED
Tuesday, May 29
8 am to 4 pm

1. Exhibits will not be accepted after 12 noon on Saturday, May 19, and WILL NOT BE ACCEPTED WITHOUT THE EXHIBIT TAG PROVIDED BY THE FAIR. Any exhibit received with an altered exhibit tag will be DISQUALIFIED unless changes have been authorized and performed by the Fair Entry Office.
2. Exhibits will not be released before 8:00 am Tuesday, May 29 and must be claimed by 4:00 pm Tuesday, May 29.
3. Only projects made in school under the supervision of a Creative Arts Teacher may be entered.
4. Projects must have been started and completed during the 12 month period preceding the fair.
5. Projects made from assembly kits are not eligible. Component parts should be made by the exhibitor wherever reasonably possible, and judges will rate accordingly.
6. A project may be entered for one award only. No exhibitor may enter more than one article made from the same pattern.
7. Each exhibitor is limited to two entries per class.
8. AGE & GRADE IN SCHOOL MUST BE STATED ON THE ENTRY FORM.
9. The Fair reserves the right to remove from display items which may be deemed vulgar or in poor taste for display in the Creative Arts - Industrial Education Building.
10. Exhibitor Tags, furnished by the fair, must be firmly attached to each exhibit.
11. All exhibits must be complete and must meet legal requirements to operate.
12. The Silver Dollar Fair will present trophies, Best of Show ribbons, and \$100.00 to the overall Best of Show in the following categories: (1) Miscellaneous Art Projects, (2) Etched & Stained Glass, (3) Sculpture, (4) Ceramics, (5) Special Education, (6) Oil & Acrylic Paintings, (7) Commercial Design & Graphics, (8) Pen & Ink Drawings, (9) Graphite Pencil Drawings, (10) Color Pencil Drawings, (11) Combined Techniques, (12) Watercolor, Pastel, & Airbrush, (13) Computer Art, (14) Darkroom Photography, and (15) Digital Photography.

13. Each school is responsible for displaying their own exhibits in booth form.

DANISH SYSTEM OF JUDGING			
GROUP	QUALITY	SCORE	RIBBON
First	Superior	92% - 100%	Blue
Second	Good	84% - 91%	Red
Third	Average, Acceptable	70% - 83%	White
Fourth	Poor, Undesirable	69% or less	Pink

The Danish System of Judging is based upon established standards of quality for each type of product. In this system, each exhibit is judged according to how well it meets that standard rather than how it compares with other exhibits.

DIVISION A - MISCELLANEOUS ART PROJECTS

DANISH SYSTEM OF JUDGING, RIBBON AWARDS ONLY 4 LEVELS

Class Class Title

- 1 Bas Relief (2-d wood carving)
- 2 Calligraphy
- 3 Collage
- 4 Mask, Other than Ceramic
- 5 Paper Cuts
- 6 Silk Screen Printing
- 7 Scratchboard
- 8 Two-dimensional, Black and White
- 9 Two-dimensional, Tissue Paper

10 Wall Plaque, Decorative

11 Any Other Miscellaneous Project, SPECIFY

DIVISION B - ETCHED GLASS

DANISH SYSTEM OF JUDGING, RIBBON AWARDS ONLY 4 LEVELS

Class Class Title

- 1 Etched Glass, Surface
- 2 Etched Glass, Relief
- 3 Etched Glass, Mirror
- 4 Etched Glass, Three Dimensional
- 5 Etched Glass, Any Other

DIVISION C - STAINED GLASS

DANISH SYSTEM OF JUDGING, RIBBON AWARDS ONLY 4 LEVELS

Class Class Title

- 1 Stained Glass, Flat
- 2 Stained Glass, Three Dimensional
- 3 Stained Glass, Lamp
- 4 Stained Glass, Any Other, SPECIFY

DIVISION D - SPECIAL EDUCATION CLASSES

DANISH SYSTEM OF JUDGING, RIBBON AWARDS ONLY 4 LEVELS

Class Class Title

- 1 Ceramics
- 2 Drawing
- 3 Woodcraft
- 4 Any Other, SPECIFY

DIVISION E - CERAMICS

DANISH SYSTEM OF JUDGING, RIBBON AWARDS ONLY 4 LEVELS

Class Class Title

- 1 Coil Method, Concealed Coil
- 2 Coil Method, Exposed Coil
- 3 Combined Technique, Slab/Coil
- 4 Combined Technique, Wheel/Hand Building
- 5 Combined Technique, Any Other Combination, SPECIFY
- 6 Drape Method
- 7 Found Mold Method
- 8 High Fire, any item
- 9 Mask
- 10 Pierced Design
- 11 Pinch Pot
- 12 Slab Method, 2-D Tiles
- 13 Slab Method, 3-D Boxes
- 14 Slab Method, Other
- 15 Wheel Thrown, Single Item
- 16 Wheel Thrown, Two or More Pieces
- 17 Wheel Thrown, Altered
- 18 Any Other Ceramic Technique, SPECIFY

DIVISION F - SCULPTURE

DANISH SYSTEM OF JUDGING, RIBBON AWARDS ONLY 4 LEVELS

Class Class Title

- 1 Clay, Animal
- 2 Clay, Fantasy
- 3 Clay, Nature
- 4 Clay, People
- 5 Clay, Any Other, SPECIFY
- 6 Abstract, Any Material
- 7 Mask
- 8 Wood
- 9 Any Other Sculpture, SPECIFY

DIVISION G - OIL PAINTING

DANISH SYSTEM OF JUDGING, RIBBON AWARDS ONLY 4 LEVELS

Class Class Title

- 1 Landscape/Seascape
- 2 People/Portrait
- 3 Waterfowl/Wild Life
- 4 Fantasy
- 5 Any Other Oil Painting

DIVISION H - ACRYLIC PAINTINGS

DANISH SYSTEM OF JUDGING, RIBBON AWARDS ONLY 4 LEVELS

Class Class Title

- 1 Landscape/Seascape
- 2 People/Portrait
- 3 Waterfowl/Wild Life
- 4 Fantasy
- 5 Any Other Acrylic Painting

DIVISION I - COMBINED TECHNIQUES

DANISH SYSTEM OF JUDGING, RIBBON AWARDS ONLY 4 LEVELS

Class Class Title

- 1 Airbrush/Pencil
- 2 Airbrush/Color Pencil
- 3 Any Other Airbrush Combination, SPECIFY
- 4 Water Color/Pen and Ink
- 5 Water Color/Pencil or Color Pencil
- 6 Ink/Color Pencil
- 7 Pencil/Color Pencil
- 8 Any Other Combination Using Ink, SPECIFY
- 9 Any Other Combination of Paint, SPECIFY
- 10 Any Other Combination using Chalk, SPECIFY
- 11 Any Other Combination, SPECIFY

DIVISION J - PEN AND INK

DANISH SYSTEM OF JUDGING, RIBBON AWARDS ONLY 4 LEVELS

Class Class Title

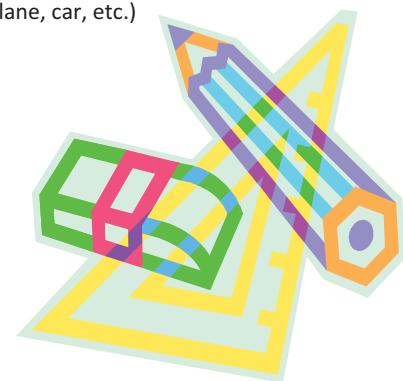
- 1 Animal
- 2 Architecture
- 3 Fantasy
- 4 Landscape - Nature
- 5 Mechanical Object (plane, car, etc.)
- 6 Portrait
- 7 Sports/Action
- 8 Still Life
- 9 Any Other Pen and Ink, SPECIFY

DIVISION K - GRAPHITE PENCIL DRAWING

DANISH SYSTEM OF JUDGING, RIBBON AWARDS ONLY 4 LEVELS

Class Class Title

- 1 Abstract
- 2 Animal
- 3 Architecture
- 4 Birds, Ducks, Geese
- 5 Fantasy
- 6 Flowers
- 7 Landscape
- 8 Life Forms
- 9 Mechanical Object (plane, car, etc.)
- 10 Nature
- 11 People/Portrait
- 12 Still Life
- 13 Any Other, SPECIFY



DIVISION L - COLOR PENCIL DRAWING

DANISH SYSTEM OF JUDGING, RIBBON AWARDS ONLY 4 LEVELS

Class	Class Title
1	Abstract
2	Animal
3	Architecture
4	Birds, Ducks, Geese
5	Fantasy
6	Flowers
7	Landscape
8	Life Forms
9	Mechanical Object (plane, car, etc.)
10	Nature
11	People/Portrait
12	Still Life
13	Any Other, SPECIFY

DIVISION M - COMMERCIAL DESIGN

DANISH SYSTEM OF JUDGING, RIBBON AWARDS ONLY 4 LEVELS

Class	Class Title
1	Advertising-Commercial Art Illustration
2	Card
3	Cartooning
4	Fashion Design
5	Lettering
6	Poster, Album Cover, Etc.
7	Word or Autograph
8	Any Other, SPECIFY

DIVISION N - GRAPHICS

DANISH SYSTEM OF JUDGING, RIBBON AWARDS ONLY 4 LEVELS

Class	Class Title
1	Block Printing
2	Silk Screen
3	Any Other, SPECIFY

DIVISION O - WATERCOLOR

DANISH SYSTEM OF JUDGING, RIBBON AWARDS ONLY 4 LEVELS

Class	Class Title
1	Abstract/Fantasy
2	Architecture
3	Animals
4	Birds/Waterfowl
5	Landscape
6	Nature
7	People
8	Still Life
9	Any Other, SPECIFY

DIVISION P - PASTEL & CHARCOAL

DANISH SYSTEM OF JUDGING, RIBBON AWARDS ONLY 4 LEVELS

Class	Class Title
1	Abstract
2	Animal
3	Landscape/Seascape
4	Nature
5	Still Life
6	Portraits
7	Any Other, SPECIFY

DIVISION Q - AIRBRUSH

DANISH SYSTEM OF JUDGING, RIBBON AWARDS ONLY 4 LEVELS

Class	Class Title
1	Abstract
2	Portrait
3	Still Life
4	Any Other, SPECIFY

DIVISION R - COMPUTER GENERATED ART, ORIGINAL

DANISH SYSTEM OF JUDGING, RIBBON AWARDS ONLY 4 LEVELS

Class	Class Title
1	Architecture
2	Fantasy
3	Landscape
4	Nature
5	People/Portrait
6	Any Other, SPECIFY

DIVISION S - COMPUTER GENERATED ART, ENHANCED

DANISH SYSTEM OF JUDGING, RIBBON AWARDS ONLY 4 LEVELS

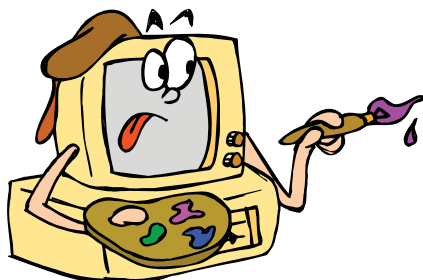
MUST SUBMIT ORIGINAL PHOTO/DOCUMENT WITH ENHANCED COPY.

Class	Class Title
1	Architecture
2	Fantasy
3	Landscape
4	Nature
5	People/Portrait
6	Any Other, SPECIFY

DIVISION T - COMPUTER ASSISTED DESIGN

DANISH SYSTEM OF JUDGING, RIBBON AWARDS ONLY 4 LEVELS

Class	Class Title
1	Calendar
2	Poster/Flyer
3	Letterhead
4	Business Card
5	Greeting Card (All artwork & writing must be original)



PHOTOGRAPHY DIVISIONS

Each picture must represent the work of the exhibitor, i.e., taken, developed, printed, and backed with cardboard or matboard, 5x7 or larger, but not to exceed 16x20 inches with identification label on the back. Color prints must have been taken and matted by the exhibitor, but may have been commercially processed.

DIVISION U - BLACK & WHITE PRINTS - DARKROOM

DIVISION V - COLOR PRINTS – DARKROOM

DIVISION W – BLACK & WHITE/COLOR PRINTS - DIGITAL

DANISH SYSTEM OF JUDGING, RIBBON AWARDS ONLY 4 LEVELS

Class	Class Title
1	Abstracts
2	Animals
3	Architecture
4	Back-lighted Silhouette
5	Close-up Study
6	Composite Print (2 or more separate images on 1 print)
7	Designs and Patterns
8	Landscape or Seascape, SPECIFY
9	Nature
10	Night Shot
11	Perspective
12	Photo through Texture Screen
13	Portraits, Children
14	Portraits, Adults
15	Special Effects (multi-printing, distortion, etc.), SPECIFY
16	Still Life
17	Study In Motion
18	Any Other Subject, SPECIFY
19	Any Other Technique, SPECIFY



**DEPARTMENT 22 -
CREATIVE ARTS - INDUSTRIAL EDUCATION
SCHOOL BOOTHS**

1. Entries close Tuesday, April 17 at 5:00 p.m. Entry Forms must be received by the Fair Entry Office at this time.
2. School Booth must be in place by Wednesday, May 23, by 6 p.m. Judging will be done Thursday, May 24, by 5:00 p.m.
3. Maximum booth size not to exceed 600 square feet. BOOTH SPACE WILL BE ASSIGNED ON A FIRST COME FIRST SERVED BASIS AS THE ENTRY FORM AND ENTRY FEE ARE RECEIVED BY THE ENTRY OFFICE, WITH PREFERENCE BEING GIVEN TO PRIOR YEAR EXHIBITORS.
4. Schools must provide their own materials for construction of their booths, including dividers. The Fair will not provide any booth dividers. With the exclusion of fair entries, all decorative materials must be flame resistant or treated.
5. Exhibit Booths should display the achievements of students in the field of Industrial Arts/Creative Arts in an attractive and educational manner. LIMITED TO ONE BOOTH ENTRY PER SCHOOL.
6. Exhibit Booth may consist of a single type of product such as wood, metal, art, etc. or any combination of products, and must contain only those projects that were entered for judging.
7. BOOTHS MUST BE DESIGNED AND CONSTRUCTED BY THE STUDENTS OF THE INDUSTRIAL EDUCATION AND CREATIVE ARTS CLASSES.
8. Maximum side wall height for a booth is 4 feet. All material used in decorating the booth must be fireproof.
9. No painting on Fair Property will be permitted.
10. **NEW – PLEASE NOTE NEW DAYS & HOURS.** BOOTH CONSTRUCTION SHALL BE FROM 8:00 A.M. TO 8:00 P.M. TUESDAY, MAY 22, AND WEDNESDAY, MAY 23, FROM 9:00 A.M. to 6 P.M.. Booth removal will be from 8:00 a.m. to 4:00 p.m. TUESDAY, MAY 29.

DIVISION A - SCHOOL EXHIBIT BOOTHS - SMALL

PREMIUMS: 1st-\$1000.00 2nd-\$750.00 3rd-\$600.00 4th-\$500.00 5th-\$400.00 6th-\$300.00
CLASS ENTRY FEE: 50.00

Class Class Title
1 Less Than 300 Square Feet

DIVISION B - SCHOOL BOOTHS - LARGE

PREMIUMS: 1st-\$1250.00 2nd-\$1000.00 3rd-\$750.00 4th-\$600.00 5th-\$500.00 6th-\$400.00
CLASS ENTRY FEE: 50.00

Class Class Title
1 More Than 300 Square Feet

SCORE CARD FOR JUDGING SCHOOL BOOTHS

EDUCATIONAL VALUE: Most interesting and informative exhibit using readable labeling, concise legends, and other educational aids to best inform the public of the aims and accomplishments of the Industrial Education and Creative Arts programs.....40%

ATTRACTIVENESS: Effective use of composition, animation, color and/or other exhibit aids to enhance appearance and create interest in the exhibit.....15%

LIGHTING.....5%

WORKMANSHIP: Design, construction and finished quality of articles made by students and displayed in the exhibit.....20%

SCOPE OF EXHIBIT: Effectively uses all the area allotted for the exhibit.....20%

TOTAL SCORE.....100%

SCORE CARDS FOR JUDGING CREATIVE ARTS

PRINTING

Workmanship.....40%

Originality of Composition.....20%

General Appearance.....20%

Art and Design.....20%

TOTAL SCORE.....100%

ARTS AND CRAFTS

Workmanship.....40%

Originality.....30%

Attractiveness.....15%

Scope of Exhibit.....15%

TOTAL SCORE.....100%