

DEPARTMENT 6 - AGRICULTURE

ENTRIES CLOSE
Tuesday, April 17
at 5 pm

EXHIBITS RECEIVED
Fri, May 18-10 am – 7 pm
or Sat, May 19-10 am – 5 pm

EXHIBITS RELEASED
Monday, May 28
at 8 pm

1. Open to residents of Butte, Colusa, Glenn, Plumas, Sutter, Tehama, and Yuba Counties.
2. Sheaves may be green and immature or mature and cured. Must be 4 inches or greater at the bottom.
3. For Bulk Grain classes, one quart jar is required.
4. Variety of products must be adequately and correctly labeled.
5. For Nut divisions-must be from last crop, approx. one pound.
6. Entries will be accepted in the Home Ec Building.
7. NO ENTRY FEE REQUIRED.



The quality desired in agricultural and horticultural product exhibits is the quality that brings the best financial return in the commercial market, and such exhibits must be at least equal in maturity as that state of ripeness required by Section 42513 of the Food and Agriculture Code in order to be considered for premium awards.

SECTION 42513: "Mature" means having reached that stage of ripeness which will insure the completion of the ripening process to a degree which will insure palatability, after the removal of the product from the tree, plant or vine.

SECTION 42515: "Overripe" means having an advanced state of maturity which causes the product to be undesirable for human consumption in a fresh state.

DIVISION A - GRAIN

PREMIUMS: 1st- \$5.00 2nd- \$4.00 3rd- \$3.00

Class	Class Title
1	Wheat, Bulk
2	Rice, Bulk
3	Wheat, Sheaves
4	Oats, Sheaves
5	Rice, Sheaves

DIVISION B - FIELD & GARDEN SEED – BULK

PREMIUMS: 1st- \$5.00 2nd- \$4.00 3rd- \$3.00

Class	Class Title
1	Black Eye Peas
2	Kidney, Any
3	Lima, Any
4	Pink Beans
5	Pinto Beans
6	White Beans
7	Cantaloupe Seeds
8	Kentucky Blue Lake Bean Seeds
9	Sunflower Seeds
10	Watermelon Seeds
11	Any other Field or Garden Seeds, specify

DIVISION C - ALMONDS

PREMIUMS: 1st- \$5.00 2nd- \$4.00 3rd- \$3.00

Class	Class Title
1	Carmel
2	Mission/Texas
3	Ne Plus/Jordanola
4	Nonpareil
5	Peerless
6	Price
7	Thompson
8	Any Other Variety, NAME

DIVISION D - WALNUTS

PREMIUMS: 1st- \$5.00 2nd- \$4.00 3rd- \$3.00

Class	Class Title
1	Chico
2	Franquette
3	Hartley
4	Serr
5	Tehama
6	Vina
7	Any other, SPECIFY



FLORICULTURE RULES – DEPARTMENTS 7 THROUGH 12

1. Open to residents of Butte, Colusa, Glenn, Plumas, Sutter, Tehama, and Yuba Counties.
 2. Entry forms for Thursday Floriculture Arrangement Divisions must be in the Entry Office by Wednesday, May 23 at 3:00 pm. All other entry forms for each day must be delivered to the Entry Office before 3:00 p.m. on the preceding day, and exhibit must be in place by 10:30 a.m. on the day designated in the exhibitor handbook.
 3. Open to amateurs only.
 4. Exhibits in the Floriculture Department must have been grown by the exhibitor within the county, district, or community represented, except for Arrangement Classes. Only persons licensed to sell nursery stock may sell plant materials which have been incorporated in displays.
 5. Fresh flowers or plant material must be used in all other classes unless otherwise specified.
 6. Potted Plants exhibits must be adequately and correctly labeled with owner's name on bottom of container. Plants should have been in the exhibitor's possession for 60 days prior to the opening day of the fair. Cut flowers must be exhibited in containers supplied by the Fair Association, except pansies which should be displayed in a shallow bowl.
 7. Arrangements entered in Junior Classes must be made by the Junior, in whose name the exhibit is entered, without adult assistance and must be made in a location designated by the Superintendent of Floriculture. Any deviation from this rule may disqualify the entry.
 8. In all arrangement classes, figurines or dry material may be used as accessories unless otherwise specified. Use of heirlooms or valuable items is discouraged. Local Rule #13.
 9. Exhibitors using special background, driftwood, figurines, etc. must furnish adequate support of same. Failure to comply with this may result in loss of premiums paid.
 10. Gardens may be removed after 8 p.m. on Monday, May 28. Floriculture surveillance will not be provided after 10 p.m.
 11. All cut flowers become property of the Fair unless called for by 7:00 a.m. the day following exhibit.
 12. The Best of Day Exhibit in the open division will receive an Outstanding Exhibit rosette ribbon and \$25.00. An Outstanding Exhibit rosette ribbon and \$10.00 will be presented to the Junior Floriculture exhibitor with the outstanding arrangement on Saturday, Sunday, & Monday.
 13. SWEEPSTAKES: Separate sweepstakes shall be offered in Collections, Potted Plants, Cut Flowers, Master Arrangements, Advanced Arrangements, Intermediate Arrangements, and Novice Arrangements. First Place \$10, Second Place \$8, Third Place \$6.
 14. DEFINITIONS:
 - NOVICE: Open to amateurs who have not won more than four blue ribbons at any previous Silver Dollar Fair.
 - INTERMEDIATE: Open to amateurs who have won five or more blue ribbons at any previous Silver Dollar Fair.
 - ADVANCED: Open to amateurs who have had five or more years of experience in flower arrangement competition and is not, or has not been engaged in flower arranging as a teacher, lecturer, judge or in a commercial enterprise.
 - MASTER: Open to all persons who have judged, lectured, or persons who have been engaged in flower arranging for a commercial enterprise.
 - TABLE SETTINGS: A decorative unit shall be included. Accessories or decorative foliage permitted. No artificial flowers, fruit or foliage permitted. Dry plant material that has been painted or treated with preservatives will not be considered artificial for the purpose of this rule. Some fresh plant material desirable in all arrangements.
- Eight table setting spaces will be available each day. Exhibitors will be assigned a table space as entries are received and will be limited to one entry per day. If an exhibitor is unable to place their table setting entry, please notify the Entry Office so an alternate can be notified.
- FUNCTIONAL TABLE SETTINGS: To be composed of one place setting to include dishes, glassware, linen (place mat and/or cloth), and a decorative unit. No flatware. Accessories may be used.
- EXHIBITION TABLE SETTINGS: To be staged with self-supporting background, provided by the exhibitor. Exhibition table is not related to the actual service of food. Only the elements and principals of design govern the selection and placements of appointments, accessories, and the decorative unit within the background space. Dishes may be hung, elevated, to create and tell a story.
- PEDESTALS: Pedestals are varied heights, and are 24" in diameter. Arrangements must be a minimum of 32 inches high and not over 5 feet to qualify.

NICHES: The fair will furnish 12 shadow boxes daily. Niches are APPROXIMATELY 29 1/2 inches high, APPROXIMATELY 31 1/2 inches wide, and 12 inches deep. The Niche theme may be interpreted using complete floral arrangements, potted plants, other fresh plant materials, accessories, and background color. Let your imagination run wild!

FIREPLACE MANTLES: The fair will furnish 4 fireplace mantles for use by the exhibitors. Mantles should be decorated with the theme assigned in mind. Potted plants and appropriate accessories may be used.

DEPARTMENT - 7
WEDNESDAY, MAY 23, 2012

POTTED PLANTS, WALL HANGINGS, & DRY ARRANGEMENT DIVISIONS
FIREPLACES, WHEELBARROWS

ENTRIES CLOSE Monday, May 14 at 5 pm	EXHIBITS RECEIVED Sunday, May 20 from 9 am to 6 pm	EXHIBITS RELEASED Monday, May 28 After 8 pm
--	--	---

1. Entry forms for these divisions must be in the entry office by Monday, May 14 at 5:00 p.m.
2. POTTED PLANTS, WALL HANGINGS, DRY ARRANGEMENTS, & FIREPLACES will be accepted on Sunday, May 20 from 9:00 a.m. to 6:00 p.m. THESE EXHIBITS WILL BE JUDGED MONDAY, MAY 21 at 9:00 a.m.
- WHEELBARROW AND WINE BARREL DIVISIONS will be accepted on Sunday, May 20 from 12:30 p.m. to 3:30 p.m. Fair personnel will be available to unload and place these items. Check in with the entry office upon arrival at the fairgrounds for directions to the unloading site. THESE EXHIBITS WILL BE JUDGED MONDAY, MAY 21 at 9:00 a.m. Wine Barrels will be placed for display at the Fair's discretion.
3. When help is needed for plant identification, enter in the questionable class and assistance will be given May 20 to place in correct class UPON REQUEST.
4. Containers must be clean and without foil (except for African Violets). See Floriculture Rule 6.
5. Potted Plants must be one plant per pot, unless otherwise specified.

DEPARTMENT - 7
DIVISION A - BONSAI

PREMIUMS: 1st- \$5.00 2nd- \$4.00 3rd- \$3.00

Class Class Title

- 1 Conifer - Any
- 2 Broad Leaf - Any
- 3 Group Planting, all of one specie, any style, 3 or more plants

DIVISION B - PLANTED CONTAINERS

PREMIUMS: 1st- \$5.00 2nd- \$4.00 3rd- \$3.00

Class Class Title

- 1 Dish Garden (large, over 12")
- 2 Dish Garden (small, less than 12" in diameter)
- 3 Indoor Planter, Any
- 4 Cactus - Best Display of several Cacti in one container
- 5 Succulents - Most artistic display in one container
- 6 Cactus/Succulent Mix - Best display in one container
- 7 Indoor Plants in bloom in unusual container
- 8 Outdoor Plants in bloom in unusual container
- 9 Indoor Plants with foliage in unusual container
- 10 Outdoor Plants with foliage in unusual container
- 11 Hanging Basket, in bloom, at least 3 varieties
- 12 Hanging Basket, herbs, at least 3, no more than 5 varieties

DIVISION C - POTTED PLANTS

PREMIUMS: 1st- \$5.00 2nd- \$4.00 3rd- \$3.00

Class Class Title

- | | |
|--|---|
| <ol style="list-style-type: none"> 1 African Violet - Variegated Foliage 2 African Violet - Best Multiple Crown 3 African Violet - Miniature, Any Type 4 African Violet - Best Girl Foliage 5 African Violet - Bi-color | <ol style="list-style-type: none"> 6 African Violet - Dark Blue 7 African Violet - Ruffled Leaf |
|--|---|



- 8 African Violet - Variegated Bloom
- 9 African Violet - Any other color or type
- 10 Asparagus Fern
- 11 Azalea - Any color
- 12 Begonia - Fibrous (Dwarf Bedding, outside)
- 13 Begonia – Rex
- 14 Begonia – Rhizomatous
- 15 Begonia - Any Other, SPECIFY
- 16 Bromeliad
- 17 Cactus - one plant
- 18 Fern - Boston, True
- 19 Fern - Five-fingered
- 20 Fern – Staghorn
- 21 Fern - Any Other True, SPECIFY
- 22 Flowering Plant, Upright, not listed elsewhere
- 23 Flowering Plant, Vine - not listed elsewhere, SPECIFY
- 24 Foliage Plant, Upright - not listed elsewhere, SPECIFY
- 25 Foliage Plant, Vine - not listed elsewhere, SPECIFY
- 26 Geranium - Ivy
- 27 Geranium - Zonal
- 28 Geranium - Any Other, SPECIFY
- 29 Pelargonium - Lady Washington
- 30 Ivy - Small Leaf
- 31 Miniature Rose - Pink, in bloom
- 32 Miniature Rose - Red, in bloom
- 33 Miniature Rose - White, in bloom
- 34 Miniature Rose - Yellow, in bloom
- 35 Orchid - Any, in bloom

- 36 Philodendron - Split Leaf
- 37 Philodendron - Any Other, SPECIFY
- 38 Pothos
- 39 Spider Plant
- 40 Succulent - Jade
- 41 Succulent - Large Type, not listed elsewhere
- 42 Succulent - Small Type, not listed elsewhere
- 43 Tropical Plant in bloom, not listed elsewhere, SPECIFY
- 44 Any Herb, Cooking or Sachet

DIVISION D - BEST COLLECTION OF POTTED PLANTS

PREMIUMS: 1st- \$5.00 2nd- \$4.00 3rd- \$3.00

NOTE: Not more than 4 varieties not less than 3. Must be in separate pots.

Class Class Title

- 1 African Violets (any type)
- 2 Begonia - Potted (variety of types)
- 3 Ferns, any
- 4 Fuchsia (in bloom)
- 5 Geraniums - Zonal (in bloom)
- 6 Geraniums - Any Other, SPECIFY
- 7 Pelargonium (in bloom)
- 8 Herbs, 3 varieties
- 9 Impatiens
- 10 Ivies
- 11 Miniature Roses (in bloom)
- 12 Succulents
- 13 Any Other Potted Plants Collection, SPECIFY

POTTED PLANTS SCORE CARD: Cultural Perfection 35%, Size of Plants 20%, Distinction 15%, Rarity 15%, Shape (according to variety) 15%.

DIVISION E - WALL HANGINGS & DRY ARRANGEMENTS - OPEN

PREMIUMS: 1st- \$8.00 2nd- \$6.00 3rd- \$4.00

Class Class Title

- 1 W/H – Frame of Reference
- 2 W/H – Inspired Salvage
- 3 W/H – Circular Thinking
- 4 D/A – Fun With Junk
- 5 D/A – “Foiling” Around
- 6 D/A – Take A Bough
- 7 W/H - Junior – Frame of Reference
- 8 D/A - Junior – Fun With Junk

DIVISION F - MINIATURES - ALL DRY MATERIAL (Not over 6 in)

PREMIUMS: 1st- \$5.00 2nd- \$4.00 3rd- \$3.00

Class Class Title

- 1 Blooming Gems
- 2 In A Nutshell, Maybe Two
- 3 Lucky Charm
- 4 Nibbles & Bits
- 5 Junior: Seaside



SCORECARD FOR FLOWER ARRANGEMENTS: Conformance 10%, Design 35%, Color Harmony 20%, Distinction 15%, Expression 20%.

DEPARTMENT - 7

DIVISION G - FIREPLACE - OPEN

PREMIUMS: 1st- \$25.00 2nd- \$20.00 3rd- \$15.00 4th- \$12.00

Class Class Title

- 1 Tuscan Countryside

Limited to 4 fireplace vignette scenes. Assigned on a first come, first serve basis upon receipt of the entry form.

SCORECARD FOR FIREPLACES: Artistic Arrangement 50%; Variety of Plant Material 15%; Accessories 15%; Completeness 20%.

DEPARTMENT - 7

DIVISION H - WHEELBARROWS

PREMIUMS: 1st- \$50.00 2nd- \$45.00 3rd- \$40.00 4th- \$35.00 5th- \$30.00

Class Class Title

- 1 Spilling Blossoms
- 2 Contrasting Foliage



1. Open to groups or individuals.
2. Any type wheelbarrow. Wheelbarrow to be provided by exhibitor. Please make sure exhibitor's name & phone number is on wheelbarrow.
3. May use accessories.
4. Wheelbarrows should be mostly completed and ready for placement when brought in. Accessories may be put in place at time wheelbarrows are accepted.
5. Wheelbarrows will be accepted in the Floriculture building. Exhibit area will be assigned to each competitor.

DEPARTMENT - 7

DIVISION I - WINE BARREL GARDEN

PREMIUMS: 1st- \$50.00 2nd- \$45.00 3rd- \$40.00 4th- \$35.00 5th- \$30.00

Use standard 1/2 cut Wine Barrel. Liners and filler may be used to keep the Wine Barrel light. After judging some may be moved to another location.

Class Class Title

- 1 Youth - Wine Barrel Garden – Exhibitor’s Choice
- 2 Adult - Wine Barrel Garden – Exhibitor’s Choice

SCORECARD FOR WHEELBARROWS & WINE BARRELS:

Artistic Arrangement 50%; Variety of Plant Material 20%; Harmony 15%; Completeness 15%.

**DEPARTMENT - 7
GARDENS**

ENTRIES CLOSE Tuesday, April 17 at 5 pm	EXHIBITS RECEIVED Must be in place May 24 by 10:00 am	EXHIBITS RELEASED Monday, May 28 after 8 pm
---	---	---

1. All individuals, organizations, churches, lodges, clubs, etc. are eligible to compete.
2. Gardens will be judged Thursday, May 24.
3. A card in an inconspicuous spot should contain the names of materials used in gardens.
4. Any accessories used must be secured, kept in working order, and shall remain in the garden for the duration of the Fair or premiums may be withheld.
5. Plant material used in garden must be living or kept fresh for the duration of the Fair.
6. A uniformly lettered sign 24 inches by 18 inches with the name of the competing individual, group, or organization should be posted on exhibit soon after judging.

DIVISION J - GARDENS - OPEN

PREMIUMS: 1st- \$150.00 2nd- \$140.00 3rd- \$130.00 4th- \$120.00

CLASS ENTRY FEE: 15.00

Class Class Title

- 1 Old Time Cottage Charm

Most unusual or unique garden fitting the theme. Use flowers and potted plants that you would find in such a garden. Any accessories appropriate to setting permitted.

SCORE CARD FOR GARDENS: Design 20%, Plant Material, Selection, and Culture 25%, Proportion to Scale 20%, Appropriateness 10%, Condition 10%, Accessories 10%, Lighting 5%.

DEPARTMENT 8 – FLORICULTURE, THURSDAY, MAY 24, 2012

ENTRIES CLOSE
Wednesday, May 23
at 3 pm

EXHIBITS RECEIVED
Thursday, May 24
7 am to 10:00 am

EXHIBITS RELEASED
Friday, May 25
7 am to 10:00 am

DIVISION A - CUT FLOWERS (3 stems each, except as noted)

PREMIUMS: 1st- \$5.00 2nd- \$4.00 3rd- \$3.00

Class Class Title

- 1 Columbine - Mixed or One Color
- 2 Petunia - Bedding, One Color
- 3 Petunia - Double, Mixed Color
- 4 Petunia - Double, One Color
- 5 Petunia - Ruffled, Mixed Color, Single
- 6 Petunia - Ruffled, One Color, California Giant
- 7 Petunia - White Double
- 8 Petunia - White Single
- 9 Petunia - Any Other, Specify
- 10 Snapdragon - Butterfly
- 11 Snapdragon - Red
- 12 Snapdragon - Shades of Pink
- 13 Snapdragon - Shades of Yellow
- 14 Snapdragon - Shades of Bronze
- 15 Snapdragon - White
- 16 Snapdragon - Not listed elsewhere, Specify

DIVISION B - ARRANGEMENTS - MASTER

PREMIUMS: 1st- \$12.00 2nd- \$10.00 3rd- \$8.00

Class Class Title

- 1 A Touch of Glass
- 2 All Wired Up
- 3 "Wooden" It Be Nice

DIVISION C - ARRANGEMENTS - ADVANCED

PREMIUMS: 1st- \$12.00 2nd- \$10.00 3rd- \$8.00

Class Class Title

- 1 Glass Act
- 2 Down To The Wire
- 3 Woodwork

DIVISION D - ARRANGEMENTS - INTERMEDIATE

PREMIUMS: 1st- \$12.00 2nd- \$10.00 3rd- \$8.00

Class Class Title

- 1 Smooth As Glass
- 2 Call Of The "Wire"
- 3 Wooden Wonder

DIVISION E - ARRANGEMENTS - NOVICE

PREMIUMS: 1st- \$12.00 2nd- \$10.00 3rd- \$8.00

Class Class Title

- 1 Glass Menagerie
- 2 High Wire Act
- 3 Wacky, Wonderful Wood

DEPARTMENT - 8

DIVISION F - NICHEs - OPEN

PREMIUMS: 1st- \$20.00 2nd- \$18.00 3rd- \$15.00
4th- \$13.00 5th- \$10.00

Class Class Title

- 1 Carousels & Memories

DIVISION G - CENTERPIECE

PREMIUMS: 1st- \$20.00 2nd- \$18.00 3rd- \$15.00
4th- \$13.00 5th- \$10.00

Class Class Title

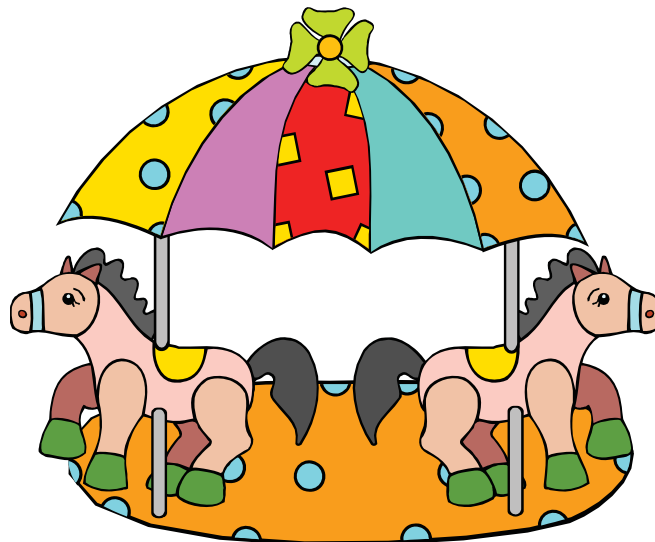
- 1 Mad Hatter's Party

DIVISION H - TABLE SETTINGS - FUNCTIONAL

PREMIUMS: 1st- \$20.00 2nd- \$18.00 3rd- \$15.00
4th- \$13.00 5th- \$10.00

Class Class Title

- 1 Spaghetti Feed



DEPARTMENT 9 – FLORICULTURE, FRIDAY, MAY 25, 2012

ENTRIES CLOSE
Thursday, May 24
at 3 pm

EXHIBITS RECEIVED
Friday, May 25
7 am to 10:00 am

EXHIBITS RELEASED
Saturday, May 26
7 am to 10:00 am

DIVISION A - CUT FLOWERS (3 stems except as noted)

PREMIUMS: 1st- \$5.00 2nd- \$4.00 3rd- \$3.00

Class Class Title

- 1 Carnation
- 2 Daisy - Marguerite, Single
- 3 Daisy - Marguerite, Double
- 4 Daisy - Esther Reed, Single
- 5 Daisy - Esther Reed, Double
- 6 Daisy - Coreopsis, Single
- 7 Daisy - Coreopsis, Double
- 8 Daisy - Shasta, Single
- 9 Daisy - Shasta, Double
- 10 Daisy - Transvaal, Gerbera, dark, double
- 11 Daisy - Transvaal, Gerbera, light, double
- 12 Daisy - Transvaal, Gerbera, dark, single
- 13 Daisy - Transvaal, Gerbera, light, single
- 14 Heuchera - Coral Bells

- 15 Larkspur - Any
- 16 Penstemon - Grandiflora, Gloxinia type
- 17 Pinks - Mixed or One Color
- 18 Verbena - Red
- 19 Verbena - Mixed
- 20 Verbena - Any Other, Specify
- 21 Zinnias
- 22 Pansies - Blue, with foliage
- 23 Pansies - Lavender, with foliage
- 24 Pansies - Maroon (Red), with foliage
- 25 Pansies - Purple, with foliage
- 26 Pansies - White, with foliage
- 27 Pansies - Yellow, with foliage
- 28 Pansies - Mixed, with foliage

DIVISION C - ARRANGEMENTS – MASTER

PREMIUMS: 1st- \$12.00 2nd- \$10.00 3rd- \$8.00

Class Class Title

- 1 An Asian Influence
- 2 Breaking The Waves
- 3 It Takes Two To Tango

DIVISION D - ARRANGEMENTS - ADVANCED

PREMIUMS: 1st- \$12.00 2nd- \$10.00 3rd- \$8.00

Class Class Title

- 1 Bombay Bazaar
- 2 Shoreside Stroll
- 3 Twice As Nice

DIVISION E - ARRANGMENTS - INTERMEDIATE

PREMIUMS: 1st- \$12.00 2nd- \$10.00 3rd- \$8.00

Class Class Title

- 1 Far East Elegance
- 2 Rocky Seashore
- 3 Dynamic Duo

DIVISION F - ARRANGEMENTS – NOVICE

PREMIUMS: 1st- \$12.00 2nd- \$10.00 3rd- \$8.00

Class Class Title

- 1 Aztec Colors
- 2 Seaside Serenity
- 3 Double Trouble

DIVISION G - NICHES - OPEN

PREMIUMS: 1st- \$20.00 2nd- \$18.00 3rd- \$15.00
4th- \$13.00 5th- \$10.00

Class Class Title

- 1 Mining Adventures

DIVISION H - PEDESTALS - OPEN

PREMIUMS: 1st- \$20.00 2nd- \$18.00 3rd- \$15.00
4th- \$13.00 5th- \$10.00

Class Class Title

- 1 The Sky's The Limit

DIVISION I - TABLE SETTINGS - OPEN - EXHIBITION ONLY

PREMIUMS: 1st- \$20.00 2nd- \$18.00 3rd- \$15.00
4th- \$13.00 5th- \$10.00

Class Class Title

- 1 Island Estate



DEPARTMENT 10 – FLORICULTURE, SATURDAY, MAY 26, 2012

ENTRIES CLOSE
Friday, May 25
at 3 pm

EXHIBITS RECEIVED
Saturday, May 26
7 am to 10:00 am

EXHIBITS RELEASED
Sunday, May 27
7 am to 10:00 am

DIVISION A - CUT FLOWERS (3 stems except as noted)

PREMIUMS: 1st- \$5.00 2nd- \$4.00 3rd- \$3.00

Class Class Title

- 1 Sweet Peas - Blue
- 2 Sweet Peas - Lavender
- 3 Sweet Peas - Maroon
- 4 Sweet Peas - Pink
- 5 Sweet Peas - Red
- 6 Sweet Peas - Rose
- 7 Sweet Peas - Salmon
- 8 Sweet Peas - White
- 9 Sweet Williams - Mixed
- 10 Sweet Williams - Pink
- 11 Sweet Williams - Red
- 12 Sweet Williams - White
- 13 Violas - Mixed, with foliage
- 14 Calendula - Light Yellow
- 15 Calendula - Orange
- 16 Canterbury Bell, 2 stems
- 17 Delphinium - Any Color, one stem
- 18 Fox Glove, 2 stems
- 19 Gardenia, any type
- 20 Hydrangea, Common, any color, one spray or stem
- 21 Hydrangea, Lace Cap, any color, one spray or stem
- 22 Hydrangea, Oak Leaf, any color, one spray or stem
- 23 Lilies - Calla, any color, 2 stems
- 24 Lilies - DeGraff Hybrid, any color, 2 stems

NOTE: In Div. A, more than 1 vase may be used for larger flowers

DIVISION B - ARRANGEMENTS - MASTER

PREMIUMS: 1st- \$12.00 2nd- \$10.00 3rd- \$8.00

Class Class Title

- 1 Black, White, & Read All Over (use newspaper)
- 2 Creole Celebration
- 3 Feather Dance



DIVISION C - ARRANGEMENTS - ADVANCED

PREMIUMS: 1st- \$12.00 2nd- \$10.00 3rd- \$8.00

Class Class Title

- 1 Black, White, & Read All Over (use newspaper)
- 2 A Night On The Town
- 3 Golden Gate

DIVISION D - ARRANGEMENTS - INTERMEDIATE

PREMIUMS: 1st- \$12.00 2nd- \$10.00 3rd- \$8.00

Class Class Title

- 1 Black, White, & Read All Over (use newspaper)
- 2 A Toss Of The Dice
- 3 Lil' Old Winemaker

DIVISION E - ARRANGEMENTS - NOVICE

PREMIUMS: 1st- \$12.00 2nd- \$10.00 3rd- \$8.00

Class Class Title

- 1 Black, White, & Read All Over (use newspaper)
- 2 One For The Road
- 3 Keeper Of The Keys

DIVISION F - NICHES - OPEN

PREMIUMS: 1st- \$20.00 2nd- \$18.00 3rd- \$15.00
4th- \$13.00 5th- \$10.00

Class Class Title

- 1 Wedding "Daze"

DIVISION G - CENTERPIECE

PREMIUMS: 1st- \$20.00 2nd- \$18.00 3rd- \$15.00
4th- \$13.00 5th- \$10.00

Class Class Title

- 1 Fiestas & Fandangos

DIVISION H - TABLESETTINGS - OPEN - FUNCTIONAL

PREMIUMS: 1st- \$20.00 2nd- \$18.00 3rd- \$15.00
4th- \$13.00 5th- \$10.00

Class Class Title

- 1 Storybook (include book)

Junior Exhibitors Please Note: Arrangements entered in Junior Classes must be made by the Junior, in whose name the exhibit is entered, without adult assistance and must be made in a location designated by the Superintendent of Floriculture. Any deviation from this rule may disqualify the entry.

* * * * JUNIOR ARRANGEMENTS * * * *

DIVISION I - ARRANGEMENTS - Juniors 11 years & under

PREMIUMS: 1st- \$8.00 2nd- \$6.00 3rd- \$5.00

Class Class Title

- 1 Black, White, & Read All Over (use newspaper)
- 2 Cat's Meow
- 3 Quilting Bee

SCORE CARD FOR JUNIOR ARRANGEMENTS: General Effect 25%, Neatness and Condition 25%, Design, including Balance and Color 25%, Originality 25%.

DIVISION J - ARRANGEMENTS - Juniors 12 to 17 years

PREMIUMS: 1st- \$8.00 2nd- \$6.00 3rd- \$5.00

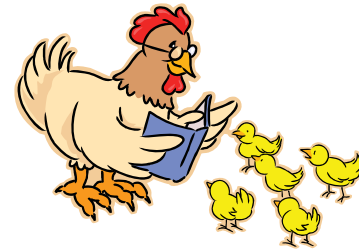
Class Class Title

- 1 Black, White, & Read All Over (use newspaper)
- 2 Boots Were Made For Plantin'
- 3 Nature's Fireworks

See next page for niches & tablesettings

DIVISION K - NICHE & TABLESETTINGS, JUNIOR
 PREMIUMS: 1st- \$12.00 2nd- \$10.00 3rd- \$8.00

- Class Class Title
 1 Niche – Wedding “Daze”
 2 T/S – Storybook (include book)



DEPARTMENT 11 – FLORICULTURE, SUNDAY, MAY 27, 2012

ENTRIES CLOSE
 Saturday, May 26
 at 3 pm

EXHIBITS RECEIVED
 Sunday, May 27
 7 am to 10:00 am

EXHIBITS RELEASED
 Monday, May 28
 7 am to 10:00 am

DIVISION A - CUT FLOWERS (One spray or stem)
 PREMIUMS: 1st- \$5.00 2nd- \$4.00 3rd- \$3.00

- Class Class Title
 1 Roses, Climbing
 2 Roses, Grandiflora, Mixed or One Color
 3 Roses, Floribunda, Pink
 4 Roses, Floribunda, Red
 5 Roses, Floribunda, Salmon
 6 Roses, Floribunda, White
 7 Roses, Floribunda, Yellow
 8 Roses, Polyanthus, Pink
 9 Roses, Polyanthus, Red
 10 Roses, Polyanthus, Salmon
 11 Roses, Hybrid Tea, Dark Red
 12 Roses, Hybrid Tea, Lavender
 13 Roses, Hybrid Tea, Peace
 14 Roses, Hybrid Tea, Pink
 15 Roses, Hybrid Tea, Red
 16 Roses, Hybrid Tea, Rose
 17 Roses, Hybrid Tea, Salmon
 18 Roses, Hybrid Tea, White
 19 Roses, Hybrid Tea, Yellow
 20 Roses, Single Type
 21 Roses, Bicolor, not listed elsewhere

DIVISION B - ARRANGEMENTS - MASTER
 PREMIUMS: 1st- \$12.00 2nd- \$10.00 3rd- \$8.00

- Class Class Title
 1 Rose & Shine
 2 Flea Market Favorite

DIVISION B – ARRANGEMENTS, MASTER, cont.
 3 Music In The Air

DIVISION C - ARRANGEMENTS - ADVANCED
 PREMIUMS: 1st- \$12.00 2nd- \$10.00 3rd- \$8.00

- Class Class Title
 1 With All My Heart (roses)
 2 Flea Market Favorite
 3 Making “Notes”

DIVISION D - ARRANGEMENTS - INTERMEDIATE
 PREMIUMS: 1st- \$12.00 2nd- \$10.00 3rd- \$8.00

- Class Class Title
 1 Ins & Outs Of Roses
 2 Flea Market Favorite
 3 Singing The Blues

DIVISION E - ARRANGEMENTS - NOVICE
 PREMIUMS: 1st- \$12.00 2nd- \$10.00 3rd- \$8.00

- Class Class Title
 1 Romantica Roses
 2 Flea Market Favorite
 3 The Sound Of Music

DIVISION F - NICHE - OPEN
 PREMIUMS: 1st- \$20.00 2nd- \$18.00 3rd- \$15.00
 4th- \$13.00 5th- \$10.00

- Class Class Title
 1 California’s Heartland

Junior Exhibitors Please Note: Arrangements entered in Junior Classes must be made by the Junior, in whose name the exhibit is entered, without adult assistance and must be made in a location designated by the Superintendent of Floriculture. Any deviation from this rule may disqualify the entry.

***** JUNIOR ARRANGEMENTS *****

DIVISION G - ARRANGEMENTS - Junior 11 years and under
 PREMIUMS: 1st- \$8.00 2nd- \$6.00 3rd- \$5.00

- Class Class Title
 1 Sweet Rosie O’Grady
 2 Flea Market Favorite
 3 Candyland

DIVISION H - ARRANGEMENTS - Junior 12 to 17 years
 PREMIUMS: 1st- \$8.00 2nd- \$6.00 3rd- \$5.00

- Class Class Title
 1 Yellow Rose Of Texas
 2 Flea Market Favorite
 3 Magnificent Seven

DIVISION I - NICHE - JUNIOR
 PREMIUMS: 1st- \$12.00 2nd- \$10.00 3rd- \$8.00

- Class Class Title
 1 California’s Heartland

DEPARTMENT 12 – FLORICULTURE, MONDAY, MAY 28, 2012

ENTRIES CLOSE
Sunday, May 27
at 3 pm

EXHIBITS RECEIVED
Monday, May 28
7 am to 10:00 am

EXHIBITS RELEASED
Monday, May 28
after 8 pm

DIVISION A - CUT FLOWERS (3 stems except as noted)

PREMIUMS: 1st- \$5.00 2nd- \$4.00 3rd- \$3.00

Class Class Title

- 1 Bottle Brush
- 2 Day Lily - Hermerocallis, Dark
- 3 Day Lily - Hermerocallis, Light
- 4 Day Lily - Hermerocallis, Pink or Melon
- 5 Flowering Shrub, not listed elsewhere
- 6 Gaillardia
- 7 Marigold - Mixed or One Color
- 8 Mock Orange - Single
- 9 Mock Orange - Double
- 10 Poppies - Any shade, single
- 11 Poppies - Any shade, double
- 12 Any Other Flower, Disc Form
- 13 Any Other Flower, Spike Form
- 14 Any Other Flower, Spray Form

DIVISION B - COLLECTIONS

PREMIUMS: 1st- \$5.00 2nd- \$4.00 3rd- \$3.00

Class Class Title

- 1 Daylilies - Hemerocallis, 6 varieties, 1 stem of each
- 2 Pansies, with foliage, light shades, 4 bowls 3-4 stems each
- 3 Pansies, with foliage, dark shades, 4 bowls 3-4 stems each
- 4 Roses, with 2 leaves, 6 varieties, 1 stem of each
- 5 Sweet Peas, without foliage, 4 vases, 3-4 stems in each

DIVISION C - ARRANGEMENTS - MASTER

PREMIUMS: 1st- \$12.00 2nd- \$10.00 3rd- \$8.00

Class Class Title

- 1 In The Frame
- 2 Game Time (Exhibitor's Choice)

DIVISION D - ARRANGEMENTS – ADVANCED

PREMIUMS: 1st- \$12.00 2nd- \$10.00 3rd- \$8.00

Class Class Title

- 1 Boxed In
- 2 Game Time (Exhibitor's Choice)

DIVISION E - ARRANGEMENTS - INTERMEDIATE

PREMIUMS: 1st- \$12.00 2nd- \$10.00 3rd- \$8.00

Class Class Title

- 1 Right Frame Of Mind
- 2 Game Time (Exhibitor's Choice)

DIVISION F - ARRANGEMENTS - NOVICE

PREMIUMS: 1st- \$12.00 2nd- \$10.00 3rd- \$8.00

Class Class Title

- 1 Framed View
- 2 Game Time (Exhibitor's Choice)

DIVISION G - NICHES - OPEN

PREMIUMS: 1st- \$20.00 2nd- \$18.00 3rd- \$15.00
4th- \$13.00 5th- \$10.00

Class Class Title

- 1 Coastal Moods

DIVISION H - TABLE SETTING - OPEN - FUNCTIONAL

PREMIUMS: 1st- \$20.00 2nd- \$18.00 3rd- \$15.00
4th- \$13.00 5th- \$10.00

Class Class Title

- 1 All American Clambake

DIVISION I - CENTERPIECE

PREMIUMS: 1st- \$20.00 2nd- \$18.00 3rd- \$15.00
4th- \$13.00 5th- \$10.00

Class Class Title

- 1 Driftwood Inspired

*** JUNIOR ARRANGEMENTS ***

DIVISION J - ARRANGEMENTS - Juniors 11 years and under

PREMIUMS: 1st- \$8.00 2nd- \$6.00 3rd- \$5.00

Class Class Title

- 1 Gimme Five!
- 2 Board Game

DIVISION K - ARRANGEMENTS - Junior 12 to 17 years

PREMIUMS: 1st- \$8.00 2nd- \$6.00 3rd- \$5.00

Class Class Title

- 1 All In A Row
- 2 Board Game

DIVISION L - NICHES & TABLESETTINGS, Junior

PREMIUMS: 1st- \$12.00 2nd- \$10.00 3rd- \$8.00

Class Class Title

- 1 Niche – Coastal Moods
- 2 T/S – All American Clambake

See Saturday for Junior Arrangement Scorecard

DEPARTMENT 13 - ART DEPARTMENT

ENTRIES CLOSE
Tuesday, April 17
at 5 pm

EXHIBITS RECEIVED
Fri, May 18-10 am – 7 pm
or Sat, May 19-10 am – 5 pm

EXHIBITS RELEASED
Monday, May 28
at 8 pm

1. ART TO BE DELIVERED AND WILL BE DISPLAYED IN THE ART CENTER BUILDING.
2. All exhibits in this department must be the original work of the exhibitor.
3. Art work must be picked up between 8:00 pm and 9:00 pm Monday, May 28 or Tuesday, May 29 from 9 am to 1 pm at the exhibit location in the Art Center Building.
4. ALL WORK MUST BE SECURELY FRAMED AND WIRED WITH CABLE FOR HANGING. No string, paper adhesive, metal saw tooth hangers or eye hooks. This rule is for the protection of your art work.
5. Because of limited space, works may be shown on a rotational basis.
6. No entries shall exceed 48" on the longest side, including the frame.
7. Each item must be listed separately on the entry form.
8. All Watercolors, Pastels, Graphics, and Drawings must be under glass.
9. All entries must be dry.
10. The fair reserves the right to not display items which may be deemed vulgar or in poor taste for display in a family fair art show.
11. EXHIBITORS ENTER AT THEIR OWN RISK.
12. No limit as to number of entries per exhibitor per class, however, each exhibitor may receive only two prize monies per class. See State Rules.
13. State Rules apply.
14. NO ENTRY FEES REQUIRED.

AMATEUR ART DIVISIONS

Amateur Art Divisions are open to those who engage in the activity as a hobby and not for profit, rather than as a profession for monetary profit. NO ENTRY FEES REQUIRED.

BEST OF SHOW - AMATEUR ART - \$50.00

DIVISION A - OIL OR ACRYLIC PAINTINGS (Specify medium used)

PREMIUMS: 1st- \$10.00 2nd- \$8.00 3rd- \$6.00
4th- \$4.00 5th- \$2.00

- | Class | Class Title |
|-------|--|
| 1 | Abstract |
| 2 | Architecture/Buildings |
| 3 | Animal/Wildlife |
| 4 | Flowers |
| 5 | Landscape |
| 6 | Nature |
| 7 | People/Portrait |
| 8 | Seascape |
| 9 | Still Life |
| 10 | Any Other, SPECIFY SUBJECT AND MEDIUM USED |



DIVISION B - WATER COLORS

PREMIUMS: 1st- \$10.00 2nd- \$8.00 3rd- \$6.00
4th- \$4.00 5th- \$2.00

- | | |
|-------|----------------------------|
| Class | Class Title |
| 1 | Animals |
| 2 | Architecture/Buildings |
| 3 | Flowers |
| 4 | Landscape |
| 5 | People/Portrait |
| 6 | Seascape |
| 7 | Still Life |
| 8 | Any Other, SPECIFY SUBJECT |

DIVISION C - PASTELS

PREMIUMS: 1st- \$10.00 2nd- \$8.00 3rd- \$6.00
4th- \$4.00 5th- \$2.00

- | | |
|-------|----------------------------|
| Class | Class Title |
| 1 | Animals |
| 2 | Birds/Waterfowl |
| 3 | Flowers/Plants |
| 4 | Nature |
| 5 | People/Portrait |
| 6 | Still Life |
| 7 | Any Other, SPECIFY SUBJECT |

DIVISION D - DRAWINGS

PREMIUMS: 1st- \$10.00 2nd- \$8.00 3rd- \$6.00
4th- \$4.00 5th- \$2.00

- | | |
|-------|---|
| Class | Class Title |
| 1 | Combined Techniques |
| 2 | Pen and Ink |
| 3 | Pencil |
| 4 | Charcoal |
| 5 | Any Other Medium, SPECIFY SUBJECT AND MEDIUM USED |

DIVISION E - MISCELLANEOUS AMATEUR ART

PREMIUMS: 1st- \$10.00 2nd- \$8.00 3rd- \$6.00
4th- \$4.00 5th- \$2.00

- | | |
|-------|--------------------------------------|
| Class | Class Title |
| 1 | Graphics |
| 2 | Sculpture |
| 3 | Etchings |
| 4 | Any Other Miscellaneous Art, SPECIFY |



DEPARTMENT 14 - PROFESSIONAL ART DIVISIONS

Professional Art Divisions are open to those who sell their art for monetary profit. NO ENTRY FEES REQUIRED.

BEST OF SHOW - PROFESSIONAL ART - \$50.00

DIVISION A - OIL OR ACRYLIC PAINTINGS (Specify medium used)

PREMIUMS: 1st- \$15.00 2nd- \$12.00 3rd- \$9.00
4th- \$6.00 5th- \$3.00

- | | |
|-------|--|
| Class | Class Title |
| 1 | Animal/Wildlife |
| 2 | Flowers |
| 3 | Landscape |
| 4 | Nature |
| 5 | People/Portrait |
| 6 | Seascape |
| 7 | Still Life |
| 8 | Any Other Subject, SPECIFY SUBJECT AND MEDIUM USED |

DIVISION B - WATER COLOR OR PASTELS

PREMIUMS: 1st- \$15.00 2nd- \$12.00 3rd- \$9.00
4th- \$6.00 5th- \$3.00

- | | |
|-------|--|
| Class | Class Title |
| 1 | Animals |
| 2 | Architecture/Buildings |
| 3 | Flowers |
| 4 | Landscape |
| 5 | People/Portrait |
| 6 | Seascape |
| 7 | Still Life |
| 8 | Any Other, SPECIFY SUBJECT & MEDIUM USED |

DIVISION C - DRAWINGS

PREMIUMS: 1st- \$15.00 2nd- \$12.00 3rd- \$9.00
4th- \$6.00 5th- \$3.00

- | | |
|-------|---|
| Class | Class Title |
| 1 | Combined Techniques |
| 2 | Pen and Ink |
| 3 | Pencil |
| 4 | Charcoal |
| 5 | Any Other Medium, SPECIFY SUBJECT AND MEDIUM USED |

DIVISION D - MISCELLANEOUS PROFESSIONAL ART

PREMIUMS: 1st- \$15.00 2nd- \$12.00 3rd- \$9.00
4th- \$6.00 5th- \$3.00

- | | |
|-------|--------------------------------------|
| Class | Class Title |
| 1 | Graphics |
| 2 | Sculpture |
| 3 | Etchings |
| 4 | Any Other Miscellaneous Art, SPECIFY |

DEPARTMENT 15 - PHOTOGRAPHY

ENTRIES CLOSE Tuesday, April 17 at 5 pm	EXHIBITS RECEIVED Fri, May 18-10 am – 7 pm or Sat, May 19-10 am – 5 pm	EXHIBITS RELEASED Monday, May 28 at 8 pm
---	--	--

1. Open to residents of Butte, Colusa, Glenn, Plumas, Sutter, Tehama, and Yuba Counties.
2. PHOTOGRAPHY TO BE DELIVERED AND WILL BE DISPLAYED IN THE JACK VANELLA HALL (SPECIAL EXHIBITS BUILDING).
3. Prints must be picked up between 8:00 pm and 9:00 pm Monday, May 28 or Tuesday, May 29 from 9 am to 1 pm at the exhibit location in the Jack Vanella Hall (Special Exhibits Building).
4. Photo size and mounting requirements:
Prints in Divisions A-B should have a minimum size of 8 x 10 inches and not to exceed 20 x 30 inches. Prints must be firmly and neatly mounted either horizontally or vertically with a border or flush. The mounting board should have a minimum size of 8 x 10 inches, and not to exceed 20 x 30 inches. MATS ONLY. NO GLASS. NO FRAMED PHOTOS WILL BE ACCEPTED. TO FACILITATE HANDLING AND CARE OF PHOTOGRAPHS, SIZE RESTRICTIONS WILL BE ENFORCED.
5. All entries should be ready to display.
6. All entries shall be clearly marked on the back of the mount for all Prints as follows: Name of Exhibitor, Address of Exhibitor, Title of Print (if any), Class number print is entered in.
7. Exhibitors enter at their own risk. The Fair Association will not be responsible for the conditions of the prints, their safe return, or for the return of prints by mail.
8. **NEW THIS YEAR! Each exhibitor shall be limited to 80 entries overall, and no more than 2 entries per class**, except that a husband and wife may each make entries. See State Rules. All entries will be judged, though not all will be hung, unless space permits. Photographs are generally rotated when space is short.
9. EACH PRINT MUST BE LISTED SEPARATELY ON THE ENTRY BLANK.
10. Any print which has been submitted for exhibition in previous years is not eligible in 2012. This rule will be strictly enforced. THE SAME PHOTO MAY NOT BE ENTERED IN MORE THAN ONE CLASS.
11. The Fair reserves the right to not display items which may be deemed vulgar, in poor taste, or inappropriate for display at a family fair photography show.
12. Photographs must have been taken by the exhibitor. The print may have been processed and matted commercially, or by the exhibitor. NO digital special effects allowed.
13. NO ENTRY FEES REQUIRED.

AMATEUR AND PROFESSIONAL DIVISION

Amateur/Professional Photography Division is open to ALL photographers. NO ENTRY FEES REQUIRED.

BEST OF SHOW BLACK & WHITE PHOTOGRAPHY - \$50.00

DIVISION A - BLACK AND WHITE PRINTS - AMATEUR/PROFESSIONAL

PREMIUMS: 1st- \$8.00 2nd- \$6.00 3rd- \$4.00

Class	Class Title
1	Abstract
2	Agriculture
3	Barns & Other Farm Structures
4	Birds/Waterfowl
5	Bridges
6	Buildings-Architectural
7	Computer/Printer Magic (may be photoshopped)
8	Domestic Animal Life
9	Flowers
10	Funny Photo
11	Industry
12	Insects
13	Landscape
14	Man's Best Friend (Dogs only)
15	Mechanical/Machinery
16	Mountains & Peaks
17	News Event
18	Night Scene
19	People - Other than Children
20	People - Children
21	Portraiture



- 22 Rainbow
- 23 Reflections
- 24 Seascape
- 25 Seasons
- 26 Shadows
- 27 Signs
- 28 Silver Dollar Fair - Past
- 29 Sports
- 30 Still Life
- 31 Storm

- 32 Sunrise-Sunset
- 33 Water/Waterfalls
- 34 Weathered & Worn
- 35 Wedding
- 36 Western
- 37 Wildlife
- 38 Winter Scene
- 39 Woodland
- 40 Any Other

BEST OF SHOW COLOR PHOTOGRAPHY - \$50.00

DIVISION B - COLORED PRINTS - AMATEUR/PROFESSIONAL

PREMIUMS: 1st- \$8.00 2nd- \$6.00 3rd- \$4.00

Class Class Title

- | | |
|--|------------------------------|
| 1 Abstract | 21 Portraiture |
| 2 Agriculture | 22 Rainbow |
| 3 Barns & Other Farm Structures | 23 Reflections |
| 4 Birds/Waterfowl | 24 Seascape |
| 5 Bridges | 25 Seasons |
| 6 Buildings-Architectural | 26 Shadows |
| 7 Computer/Printer Magic (may be photoshopped) | 27 Signs |
| 8 Domestic Animal Life | 28 Silver Dollar Fair - Past |
| 9 Flowers | 29 Sports |
| 10 Funny Photo | 30 Still Life |
| 11 Industry | 31 Storm |
| 12 Insects | 32 Sunrise-Sunset |
| 13 Landscape | 33 Water/Waterfalls |
| 14 Man's Best Friend (Dogs only) | 34 Weathered & Worn |
| 15 Mechanical/Machinery | 35 Wedding |
| 16 Mountains & Peaks | 36 Western |
| 17 News Event | 37 Wildlife |
| 18 Night Scene | 38 Winter Scene |
| 19 People - Other than Children | 39 Woodland |
| 20 People - Children | 40 Any Other |



DEPARTMENT 16 - BAKING AND CONFECTIONS

ENTRIES CLOSE
Tuesday, April 17
at 5 pm

EXHIBITS RECEIVED
Tuesday, May 22
from 2 pm to 9 pm

EXHIBITS RELEASED
After 8 pm Monday
May 28

1. Open to residents of Butte, Colusa, Glenn, Plumas, Sutter, Tehama, and Yuba Counties.
2. All entries in this department must be home prepared by the exhibitor.
3. Baked Goods and Confections should be displayed in clear plastic zip-locking bags.
4. Cookies, rolls, biscuits, and confections should be displayed on paper plates inside zip-lock plastic bags. Cakes should be displayed on cardboard bases and in zip-lock bags or plastic wrap. ONE EXTRA PIECE SHOULD BE ATTACHED, WRAPPED SEPARATELY, FOR THE JUDGE.
5. Entries that require refrigeration will not be accepted. Entries that spoil during the fair will be removed.
6. These rules must be explicitly followed or entries may be disqualified.
7. NO ENTRY FEE REQUIRED.

QUANTITIES REQUIRED

Biscuits, Muffins, Rolls, Cookies - 1/2 dozen, plus one
Cakes - 1/2 cake, plus 1 slice
Bread - 1/2 loaf, plus 1 slice
Confections - 6 1"x1" pieces (size approximate)
Pies - 1 small pie

The SILVER DOLLAR FAIR will sponsor a BEST OF SHOW cash prize of \$50 for the winner of each following categories:

Biscuits, Bread & Rolls - Cookies - Pies - Loaf, Pound & Layer Cakes - Confections

DIVISION A - BISCUITS, BREADS AND ROLLS - USING NO YEAST

PREMIUMS: 1st- \$5.00 2nd- \$4.00 3rd- \$3.00

(1/2 dozen biscuits or rolls, 1/2 loaf bread)

Class Class Title

- 1 Quick Bread, Banana or Banana Nut
- 2 Quick Bread, Zucchini
- 3 Quick Bread, Any Other, SPECIFY
- 4 Baking Powder Biscuits
- 5 Coffee Cake
- 6 Cornbread
- 7 Muffins, Bran
- 8 Muffins, Any Fruit, SPECIFY
- 9 Muffins, Any Other, SPECIFY
- 10 Any Other Biscuit, Bread or Roll, using no yeast, SPECIFY

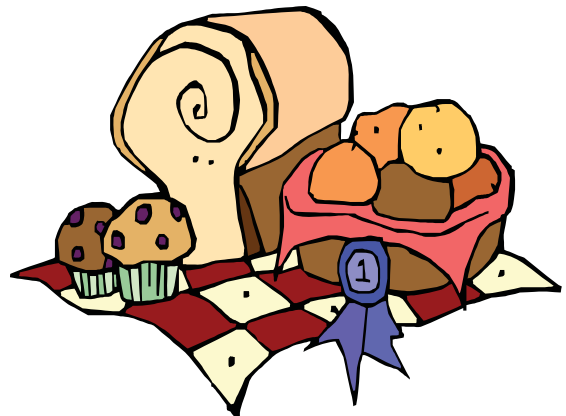
DIVISION B - BISCUITS, BREADS AND ROLLS - USING YEAST

PREMIUMS: 1st- \$5.00 2nd- \$4.00 3rd- \$3.00

(1/2 dozen biscuits or rolls, 1/2 loaf bread)

Class Class Title

- 1 Cinnamon Rolls
- 2 Coffee Cake
- 3 Dinner Rolls
- 4 Novelty Bread, SPECIFY
- 5 Tea Ring, SPECIFY
- 6 White Yeast Bread
- 7 Whole Wheat Yeast Bread
- 8 Any Bread Sweetened with Honey
- 9 Any Other Bread not listed elsewhere, SPECIFY



DIVISION C - CAKES - LOAF, POUND, LAYER, OR DECORATED

PREMIUMS: 1st- \$5.00 2nd- \$4.00 3rd- \$3.00

(1/2 cake plus one slice)

- | Class | Class Title |
|-------|---|
| 1 | Any Layer Cake, SPECIFY flavor |
| 2 | Any Fruit Flavor, SPECIFY |
| 3 | Angel Food Cake |
| 4 | Applesauce Cake |
| 5 | Bundt Cake |
| 6 | Carrot Cake |
| 7 | Chiffon or Sponge Cake |
| 8 | Fruit Cake |
| 9 | Pound Cake |
| 10 | Rum Cake |
| 11 | Upside Down Cake |
| 12 | Any other Cake, not listed above, SPECIFY |
| 13 | DECORATED CAKE |



The quantity rule does not apply to class #13. Decorated cakes may use a cake "form". Will be judged on the decoration not the cake itself.

DIVISION D - CONFECTIONS

PREMIUMS: 1st- \$5.00 2nd- \$4.00 3rd- \$3.00

(6 1"x1" pieces, plus one piece)

- | Class | Class Title |
|-------|--|
| 1 | Bark Candy |
| 2 | Fudge, Chocolate |
| 3 | Fudge, White |
| 4 | Peanut Brittle |
| 5 | Toffee |
| 6 | Truffles |
| 7 | Candied Fruit or Nuts |
| 8 | Any Other Candy, not listed above, SPECIFY |

DIVISION E - COOKIES

PREMIUMS: 1st- \$5.00 2nd- \$4.00 3rd- \$3.00

(1/2 dozen, plus one cookie)

- | Class | Class Title |
|-------|---|
| 1 | Bar Cookie, using Chocolate |
| 2 | Bar Cookie, using Fruit |
| 3 | Bar Cookie, using Nuts |
| 4 | Bar Cookie, any other, SPECIFY |
| 5 | Brownies |
| 6 | Chocolate Chip |
| 7 | Cookies From Around The World |
| 8 | Drop Cookies |
| 9 | Filled |
| 10 | Ginger Snaps |
| 11 | Ice Box Cookies |
| 12 | Macaroon |
| 13 | Oatmeal |
| 14 | Pressed |
| 15 | Peanut Butter |
| 16 | Persimmon |
| 17 | Rolled |
| 18 | Sugar |
| 19 | Decorated Cookie |
| 20 | Gingerbread People |
| 21 | Any Other Cookie, Not listed above, SPECIFY |

DIVISION F - PIES

PREMIUMS: 1st- \$5.00 2nd- \$4.00 3rd- \$3.00

(one small pie)

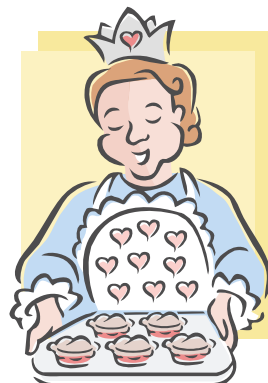
- | Class | Class Title |
|-------|------------------------------------|
| 1 | One-crust Pie, Pecan or Walnut |
| 2 | One-crust Pie, Any Other, SPECIFY |
| 3 | Two-crust Pie, Apple |
| 4 | Two-crust Pie, Apricot |
| 5 | Two-crust Pie, Cherry |
| 6 | Any Other Pie, not listed, SPECIFY |
| 7 | Tarts, Any Flavor, SPECIFY |

PIE MUST NOT NEED REFRIGERATION

DIVISION G - USING VALLEY TREASURES

PREMIUMS: 1st- \$5.00 2nd- \$4.00 3rd- \$3.00

- | Class | Class Title |
|-------|---|
| 1 | Cake Using Walnuts |
| 2 | Cake Using Almonds |
| 3 | Candies Using Almonds |
| 4 | Cookies Using Persimmons |
| 5 | Any, Using Prunes |
| 6 | Salted Almonds |
| 7 | Any Other Treasure, not listed above, SPECIFY |



GIFT PACKS

DEPARTMENT 16

DIVISION H - GIFT PACKS

PREMIUMS: 1st- \$8.00 2nd- \$6.00 3rd- \$4.00

Special Rules:

1. Gift Packs should be in appropriate containers, and must be covered with plastic wrap. If displayed in a box with a lid, plastic wrap should be under the lid so the gift pack can be displayed.

2. Gift Packs should be packaged for gift giving.

3. A separately wrapped sample of each type item in a gift pack must be provided for judging, except preserved food and wine.

4. Gift Packs will be judged on quality of product and attractiveness of packaging.

5. Gift Packs must contain at least 2 different kinds of items (i.e. 2 or more kinds of candy, 2 or more kinds of cookies, etc.)

Class Class Title

- 1 "Sugar Time, Sugar Time" (Candy)
- 2 "Baker's Dozen" (Cookies)
- 3 "Dried & True" (Dried Fruit)
- 4 "Nuts About Nuts" (Nuts)
- 5 "Gems of the Garden" (Preserved Foods)
- 6 "Go With The Grain" (Breads)
- 7 "It's In The Bottle" (Wine)
- 8 "California Sunshine" (Combination)

SPECIAL AWARDS PRESENTED BY:



Maisie Jane's California Sunshine Products, Inc.
1324 Dayton Road, Chico CA 95928
www.maisiejanes.com

DEPARTMENT 17 - CLOTHING AND TEXTILES

ENTRIES CLOSE
Tuesday, April 17
at 5 pm

EXHIBITS RECEIVED
Fri, May 18-10 am – 7 pm
or Sat, May 19-10 am – 5 pm

EXHIBITS RELEASED
Monday, May 28
at 8 pm

1. Open to residents of Butte, Colusa, Glenn, Plumas, Sutter, Tehama, and Yuba Counties.
2. All entries in this division must have been home produced by the exhibitor and must not have been displayed in any past Silver Dollar Fair.
3. Exhibits must be clean, pressed and ready for display.
4. Display and Hanging Instructions:
 - Clothing must be on hangers
 - Tapestry or wall hangings must be prepared for hanging
 - QUILTS MUST HAVE SLEEVE FOR HANGING
5. There is no limit as to the number of entries per exhibitor per class, however, only two prize monies will be paid per exhibitor per class. See State Rules.
6. NO ENTRY FEES REQUIRED.

The SILVER DOLLAR FAIR will award, in addition to regular premiums, a \$100 BEST OF SHOW AWARD to the winner of each of the following categories:

- *Afghans *Bedspreads and Bedroom Furnishings *Dining Room Furnishings *Quilts *Kitchen & Bathroom Furnishings
*Wearing Apparel *Living Room Furnishings *Miscellaneous Categories
Selections will be made by the Home Economics Judge.

DIVISION A - HOME FURNISHINGS

PREMIUMS: 1st- \$8.00 2nd- \$6.00 3rd- \$4.00

Class Class Title

- 1 Afghan, Knitted
- 2 Afghan, Crocheted
- 3 Afghan, ORIGINAL PATTERN
- 4 Baby Afghan, Knitted
- 5 Baby Afghan, Crocheted
- 6 Bedspread, Crocheted
- 7 Bedspread, Any Other
- 8 Quilt, Crib Size, Appliqued
- 9 Quilt, Crib Size, Handmade
- 10 Quilt, Crib Size, Machine Made
- 11 Quilt, Appliqued
- 12 Quilt, Machine Quilted
- 13 Quilt, Machine Stitched/Hand Quilted
- 14 Quilt, Crazy, Embroidered, X-Stitch, Candlewick, etc.
- 15 Quilt, All Handmade
- 16 Quilt, Tied
- 17 Quilt, Friendship or Group
- 18 Quilt, Any Other



DIVISION B - BEDROOM FURNISHINGS

PREMIUMS: 1st- \$5.00 2nd- \$4.00 3rd- \$3.00

Class Class Title

- 1 Dresser Scarf, Embroidered, with or without crocheted edge
- 2 Dresser Scarf, Crocheted
- 3 Pillow Case, Any, one pair
- 4 Wall Hanging for Bedroom
- 5 Pillow, Any
- 6 Any Other Bedroom Furnishing, not listed above, SPECIFY

DEPARTMENT 17

DIVISION C - DINING ROOM FURNISHINGS

PREMIUMS: 1st- \$5.00 2nd- \$4.00 3rd- \$3.00

Class Class Title

- 1 Centerpiece, Flat
- 2 Doily, 12" to 18", Crocheted
- 3 Doily, over 18", Crocheted
- 4 Doily, under 12", Crocheted or Other Stitch
- 5 Doily, 12" and over, Other Than Crocheted
- 6 Place Mat Set, Mat and Napkin, (2 pieces)
- 7 Table Cloth, Crocheted
- 8 Table Cloth, Any, Other than crocheted
- 9 Table Runner
- 10 Any Other Dining Room Furnishing, SPECIFY

DIVISION D - KITCHEN AND BATHROOM FURNISHINGS

PREMIUMS: 1st- \$5.00 2nd- \$4.00 3rd- \$3.00

Class Class Title

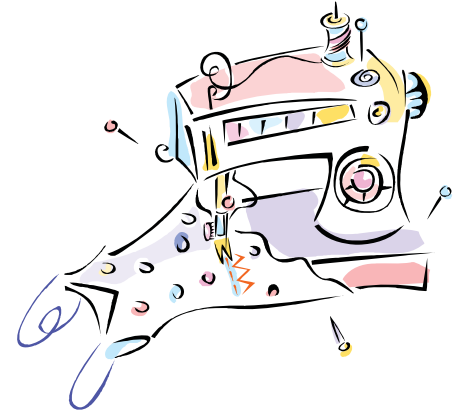
- 1 Bazaar Item, Any
- 2 Pot Holders, 2 pieces
- 3 Picture or Wall Hanging for Kitchen or Bathroom
- 4 Towel, Bath, Decorated
- 5 Towel, Dish, Embroidered, 2 pieces
- 6 Towel, Kitchen Hand Towel, 2 pieces
- 7 Any Other Bathroom Furnishing, SPECIFY
- 8 Any Other Kitchen Furnishing, SPECIFY

DIVISION E - LIVING ROOM FURNISHINGS

PREMIUMS: 1st- \$5.00 2nd- \$4.00 3rd- \$3.00

Class Class Title

- 1 Needlepoint Item: chair, pillow, cushion, picture, etc.
- 2 Rug, Any
- 3 Sofa Pillow, Crocheted or Knitted, SPECIFY
- 4 Sofa Pillow, Any Other, SPECIFY
- 5 Stitchery or Needlework, Original Design
- 6 Wall Hanging, Counted Cross Stitch
- 7 Wall Hanging, Needlework
- 8 Wall Hanging, Quilted
- 9 Wall Hanging, Any Other, SPECIFY
- 10 Any Other Item of Living Room Furnishings, SPECIFY



DIVISION F - INFANT & TODDLER WEAR - NURSERY ACCESSORIES

PREMIUMS: 1st- \$5.00 2nd- \$4.00 3rd- \$3.00

(Infant sizes through 4T)

Class Class Title

- 1 Booties
- 2 Cap
- 3 Dress
- 4 Infant Set (Booties, Cap & Sweater) Knitted or Crocheted
- 5 Sweater
- 6 Dolls, Soft Sculpture, any size
- 7 Dolls, Any size
- 8 Teddy Bear, Any size
- 9 Toy, Any Crocheted
- 10 Toy, Stuffed, Any
- 11 Any Crib or Nursery Accessory, SPECIFY
- 12 Any Other Item of Infant or Toddler Wear, SPECIFY
- 13 Any Other Infant or Toddler Item, SPECIFY

DIVISION G - CHILDREN'S WEAR

PREMIUMS: 1st- \$5.00 2nd- \$4.00 3rd- \$3.00

(Children's Sizes 2-6X)

Class Class Title

- 1 Blouse or Shirt
- 2 Dress, Casual or Dressy
- 3 Play Clothes, SPECIFY
- 4 Pajamas or Nightgown
- 5 Skirt
- 6 Sweater
- 7 Vest
- 8 Any Item of Decorated Wearing Apparel, SPECIFY
- 9 Any Other Item of Children's Wear, SPECIFY

DIVISION H - WEARING APPAREL - YOUTH AND ADULTS

PREMIUMS: 1st- \$5.00 2nd- \$4.00 3rd- \$3.00

Class Class Title

- 1 Apron, Any, SPECIFY
- 2 Blouse, Any
- 3 Dress, Any
- 4 Dress, Formal/Wedding
- 5 Jacket, Lined
- 6 Jacket, Unlined
- 7 Pajamas or Nightgown
- 8 Skirt
- 9 Slippers, Knitted/Crocheted
- 10 Sweat Shirt, Purchased & Hand Decorated
- 11 Sweater, Crocheted, Cardigan or Pullover



DEPARTMENT 17

DIVISION H – WEARING APPAREL, YOUTH & ADULT, cont.

- 12 Sweater, Hand Knit, Fingering Yarn
- 13 Sweater, Hand Knit, Sport Yarn
- 14 Sweater, Hand Knit, Worsted Yarn
- 15 Sweater, Hand Knit, Bulky Yarn, Cardigan/Pullover
- 16 Shirt, Man's
- 17 Shawl
- 18 T-Shirt, Purchased & Hand Decorated
- 19 Socks, Knitted
- 20 Vest, Knitted or Crocheted
- 21 Vest, Any Fabric
- 22 Any Other Hand Knit/Crocheted Apparel, SPECIFY
- 23 Any Other Item of Wearing Apparel, SPECIFY

DIVISION J – GIFT WRAPPED PACKAGES (Set of 3)

PREMIUMS: 1st- \$5.00 2nd- \$4.00 3rd- \$3.00

- | Class | Class Title |
|-------|--------------------|
| 1 | Anniversary |
| 2 | Baby |
| 3 | Birthday |
| 4 | Christmas |
| 5 | Graduation |
| 6 | Wedding |
| 7 | Any Other, SPECIFY |

DIVISION L - HOBBIES AND HAND CRAFTS

PREMIUMS: 1st- \$5.00 2nd- \$4.00 3rd- \$3.00

- | Class | Class Title |
|-------|---|
| 1 | Ceramics, Handmade, Any |
| 2 | Knit/Crocheted Novelties |
| 3 | Jewelry |
| 4 | Leatherwork |
| 5 | Needlecraft or Needlework, Original |
| 6 | Porcelain Art/China Painting, Any Subject |
| 7 | Sculpturing, Any Material |
| 8 | Stained Glass, Any |
| 9 | Tole Painting |
| 10 | Wood Carving |
| 11 | Wood Craft, Any |
| 12 | Wreath, Any Decorative |
| 13 | Any Other Craft, under 12", SPECIFY |
| 14 | Any Other Craft, over 12", SPECIFY |

DIVISION I - MISCELLANEOUS TEXTILES ITEM

PREMIUMS: 1st- \$5.00 2nd- \$4.00 3rd- \$3.00

- | Class | Class Title |
|-------|---------------------------------------|
| 1 | Doll Clothes or Furnishings |
| 2 | Hat |
| 3 | Photo Album |
| 4 | Purse or Tote Bag |
| 5 | Scarf |
| 6 | Stuffed Accessory, NOT A TOY, SPECIFY |

DIVISION K – HANDSPUN YARN

PREMIUMS: 1st- \$5.00 2nd- \$4.00 3rd- \$3.00

- | Class | Class Title |
|-------|---|
| 1 | Wool, 2 ply, Skein - White or Natural Colored |
| 2 | Wool, 2 ply, Skein - using natural dyes |
| 3 | Alpaca, 2 ply, Skein - Any Color |
| 4 | Any Handspun Yarn, any ply, Skein - Any Color |
| 5 | Any item made from Handspun Yarn |

In Class #5 the item must have been made by exhibitor and contain at least 80% of handspun yarn spun by the exhibitor.



DEPARTMENT 18 - SENIOR PRESERVED FOODS

ENTRIES CLOSE	EXHIBITS RECEIVED	EXHIBITS RELEASED
Tuesday, April 17 at 5 pm	Fri, May 18-10 am – 7 pm or Sat, May 19-10 am – 5 pm	Monday, May 28 at 8 pm

1. Open to residents of Butte, Colusa, Glenn, Plumas, Sutter, Tehama, and Yuba Counties.
2. State Rules and Score Cards apply to these divisions.
3. All jars must be washed, clean and labeled as to what they contain, but not bearing the name of the exhibitor.
4. ALL ARTICLES ARE ENTERED AT THE EXHIBITOR'S OWN RISK.
5. No commercial products will be received for exhibit.
6. Rings must be on jars, but loose enough to be easily opened.
7. All entries in these divisions must be home prepared and canned by the exhibitor within one year of the opening date of the fair. All products which have not been otherwise eliminated and that are being considered for cash awards will be opened.
8. Exhibits must be displayed in jars specifically designed for home canning.
9. Non-acid foods - all vegetables, meats, poultry, and fish must be canned UNDER PRESSURE. Low-acid fruit, such as figs, should be made more acid by adding lemon juice as directed in the University of California Extension Service leaflet, "Home Canning of Fruits". Tomatoes and fruits (not including their juices) must be processed in a boiling water bath.
10. NO ENTRY FEES REQUIRED.

The SILVER DOLLAR FAIR will award, in addition to regular premiums, a \$50 BEST OF SHOW AWARD to the winner of each of the following areas:
Best Canned Vegetable * Best Canned Fruit
Best Pickle or Relish
Best Jam, Jelly, Preserve, Marmalade or Butters

Selections will be made by the Home Economics Judges. No pre-entry required.

ALLTRISTA CORPORATION

ALLTRISTA CONSUMER PRODUCTS COMPANY Proudly Presents:

2012 ADULT PREMIUM FOOD PRESERVATION AWARDS

Jarden Home Brands makers of Ball and Kerr Fresh Preserving Products is proud to recognize today's fresh preserving (canning) enthusiasts, so First and Second Place Awards will be given to those individuals judged as the best in designated recipe categories.

Judges will select the two best entries submitted by an adult in Fruit, Vegetable, Pickle, and Soft Spread categories. Entries must be preserved in Ball or Ball Collection Elite Jars sealed with Ball Lids and Bands or Ball Collection Elite Lids and Bands, or preserved in Kerr Jars sealed with Kerr Lids and Bands or Ball Collection Elite Lids and Bands. In addition, soft spread entries will be limited to recipes prepared using Ball Pectin: Original, No Sugar Needed or Liquid. A proof of purchase for Ball pectin must be provided at time of entry.

The entries designated First Place from each category will receive the following:

- * Two(2) Five Dollar Coupons (\$5) for Ball or Kerr Fresh Preserving Products and one (1) Three Dollar Coupon (\$3) for Ball Pectin Products.

The entries designated Second Place from each category will receive the following:

- * One (1) Five Dollar Coupon (\$5) for Ball or Kerr Fresh Preserving Products and one (1) Three Dollar (\$3) Coupon for Ball Pectin Products.



DIVISION A - CANNED FRUIT (pint jars preferred)

PREMIUMS: 1st- \$5.00 2nd- \$4.00 3rd- \$3.00

- | Class | Class Title |
|-------|---------------------------------|
| 1 | Applesauce |
| 2 | Apricots, Halves |
| 3 | Apricots, Whole |
| 4 | Berries |
| 5 | Cherries, Light |
| 6 | Cherries, Dark |
| 7 | Peaches, Freestone |
| 8 | Peaches, Cling |
| 9 | Pears |
| 10 | Plums |
| 11 | Prunes |
| 12 | Strawberries |
| 13 | Any Other Canned Fruit, SPECIFY |



DIVISION B - CANNED VEGETABLES (pint jars preferred)

PREMIUMS: 1st- \$5.00 2nd- \$4.00 3rd- \$3.00

- | Class | Class Title |
|-------|--------------------|
| 1 | Beans, Green |
| 2 | Beets |
| 3 | Carrots |
| 4 | Corn |
| 5 | Peas |
| 6 | Squash |
| 7 | Tomatoes |
| 8 | Any Other, SPECIFY |

DIVISION C - PICKLES AND RELISHES (pint jars preferred)

PREMIUMS: 1st- \$5.00 2nd- \$4.00 3rd- \$3.00

- | Class | Class Title |
|-------|------------------------------------|
| 1 | Beans |
| 2 | Beets |
| 3 | Bread and Butter, Cucumber |
| 4 | Bread and Butter, Zucchini |
| 5 | Chili Sauce |
| 6 | Chutney |
| 7 | Dill Pickles, Sliced |
| 8 | Dill Pickles, Whole |
| 9 | Dill Pickle Relish |
| 10 | Figs |
| 11 | Mixed |
| 12 | Okra |
| 13 | Olives, Home Cured |
| 14 | Peach |
| 15 | Pear |
| 16 | Peppers |
| 17 | Salsa or Mexican Relish |
| 18 | Sweet Pickle Relish |
| 19 | Sweet Pickles, Chunks |
| 20 | Sweet Pickles, Sliced |
| 21 | Sweet Pickles, Whole |
| 22 | Tomato Sauce or Catsup, SPECIFY |
| 23 | Watermelon Pickles |
| 24 | Zucchini Relish |
| 25 | Any Other Pickle, SPECIFY |
| 26 | Any Other Sauce or Relish, SPECIFY |

DIVISION D - JAMS (pint jars preferred)

PREMIUMS: 1st- \$5.00 2nd- \$4.00 3rd- \$3.00

- | Class | Class Title |
|-------|---|
| 1 | Apricot |
| 2 | Blackberry |
| 3 | Boysenberry |
| 4 | Cherry |
| 5 | Fig |
| 6 | Jalapeno Pepper |
| 7 | Kiwi |
| 8 | Loganberry |
| 9 | Peach |
| 10 | Plum |
| 11 | Raspberry |
| 12 | Strawberry |
| 13 | Any Apricot Combination Jam |
| 14 | Any Other Berry Jam, SPECIFY |
| 15 | Any Combination Jam, 2 or more fruits SPECIFY |
| 16 | Any Other Jam, not listed elsewhere, SPECIFY |

DIVISION E - JELLIES (clear jelly jars preferred)

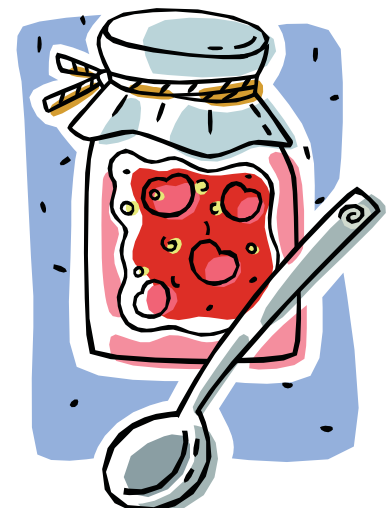
PREMIUMS: 1st- \$5.00 2nd- \$4.00 3rd- \$3.00

- | Class | Class Title |
|-------|---------------------------------------|
| 1 | Apple |
| 2 | Blackberry |
| 3 | Boysenberry |
| 4 | Crabapple |
| 5 | Grape |
| 6 | Hot Pepper Jelly |
| 7 | Kiwi |
| 8 | Loganberry |
| 9 | Mint |
| 10 | Plum |
| 11 | Pomegranate |
| 12 | Raspberry |
| 13 | Strawberry |
| 14 | Any Other Berry Jelly, SPECIFY |
| 15 | Any Other Single Fruit Jelly, SPECIFY |
| 16 | Any Combination Jelly, SPECIFY |

DIVISION F - PRESERVES (1/2 pint jars preferred)

PREMIUMS: 1st- \$5.00 2nd- \$4.00 3rd- \$3.00

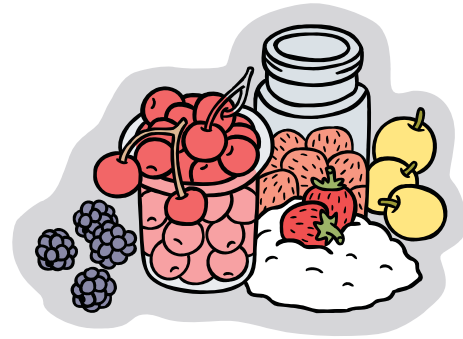
- | Class | Class Title |
|-------|-----------------------------|
| 1 | Berry |
| 2 | Fig |
| 3 | Peach |
| 4 | Plum |
| 5 | Pear |
| 6 | Strawberry |
| 7 | Any Other Preserve, SPECIFY |



DIVISION G - MARMALADES AND BUTTERS (1/2 pint jars preferred)

PREMIUMS: 1st- \$5.00 2nd- \$4.00 3rd- \$3.00

- | | |
|-------|-------------------------------|
| Class | Class Title |
| 1 | Butter, Apple |
| 2 | Butter, Peach |
| 3 | Butter, Pear |
| 4 | Butter, Any Other, SPECIFY |
| 5 | Conserve, Any, SPECIFY |
| 6 | Marmalade, Apricot |
| 7 | Marmalade, Lemon |
| 8 | Marmalade, Orange |
| 9 | Marmalade, Any Other, SPECIFY |



DIVISION H - MISCELLANEOUS PRESERVED FOODS

PREMIUMS: 1st- \$5.00 2nd- \$4.00 3rd- \$3.00

- | | |
|-------|------------------------------------|
| Class | Class Title |
| 1 | Dried Fruit, SPECIFY |
| 2 | Dried Vegetables, SPECIFY |
| 3 | Fruit Leather |
| 4 | Jerky |
| 5 | Herbed Vinegar, Identify Herb Used |
| 6 | Any Other Preserved Food, SPECIFY |

DEPARTMENT 19 - FUNCTIONAL TABLE SETTINGS

ENTRIES CLOSE Tuesday, April 17 at 5 pm	EXHIBITS RECEIVED Fri, May 18-10 am – 7 pm or Sat, May 19-10 am – 5 pm	EXHIBITS RELEASED Monday, May 28 at 8 pm
---	--	--

1. A functional table setting shall be composed of: one place setting to include dishes, glassware, linen (cloth, mats, napkins, etc.) and a decorative unit. NO FLATWARE. Exhibitors must furnish their own table and all materials. Size not to exceed 36"x36" square or 36" in diameter if round.
2. Decorative unit may contain fresh, silk, dry flowers or materials, or any combination of these. If fresh flowers are used in the decorative unit, freshness must be maintained for the duration of the fair, or premiums will be withheld. If fresh floral arrangement is used, the arrangement may be put in place on Wednesday, May 23, between 8:00 a.m. and 10:00 a.m. Finishing touches may be done at this time, but basic table setting should be complete by 5:00 p.m. Saturday, May 19.
3. Functional table settings will be displayed in the Home Economics Building, and will be judged by Home Economics judges.

DIVISION A - FUNCTIONAL TABLE SETTINGS

PREMIUMS: 1st- \$20.00 2nd- \$15.00 3rd- \$10.00
4th- \$5.00
CLASS ENTRY FEE: 2.00

- | | |
|-------|------------------------------|
| Class | Class Title |
| 1 | Champagne Brunch |
| 2 | Dining Drama. Japanese Style |



DIVISION B - FUNCTIONAL TABLE SETTINGS - JUNIOR

DANISH SYSTEM OF JUDGING 3 LEVELS
PREMIUMS: 1st- \$10.00 2nd- \$8.00 3rd- \$6.00
4th- \$4.00
CLASS ENTRY FEE: 2.00

- | | |
|-------|----------------|
| Class | Class Title |
| 1 | Chips & Dips |
| 2 | Hacienda Style |